



# Parks and Recreation Master Plan

2023-2027

**RECEIVED**

*By Robert C. Vautaw at 10:40 am, Mar 06, 2023*

**City Council**

Craig Ardis, Mayor

Robert Pickford, Mayor Pro-Term

Arlo Bart

Grant Elmquist

Kathleen Ostrander

Patrick Smith

Tracy Bartz

**City Staff**

Lori Thiebaut, Billing Manager

Judy Houle, City Clerk

Danielle Hoblet, City Treasurer

Bob Vautaw, City Administrator

Ray Vassar, Dept. of Public Works & City Superintendent

# Table of Contents

**Executive Summary ..... 4**  
 Introduction ..... 4

**Community Description..... 4**  
 Location & Historical Context:..... 4  
 Demographics: ..... 5

**Administrative Structure ..... 7**  
 Relationships ..... 8  
 Parks Budget and Funding ..... 9

**Resource Inventory ..... 10**  
 Recreation Inventory ..... 10  
 Community Recreation Planning ..... 10  
 Lakes and Streams ..... 10  
 Overall City Parks Inventory Map ..... 13  
 City Park ..... 14  
 Road End Lake Access ..... 15  
 Lake City Skate Park ..... 16  
 Maple Grove Park ..... 17  
 Miltner Beach Park..... 18  
 Missaukee Ski Mountain ..... 19  
 City Parks and Recreation Resources ..... 20

**Planning Process ..... 21**  
 Public Input ..... 21  
 Survey Summary Results ..... 21

**Goals and Objectives ..... 23**

**Action Program ..... 25**

**Appendix A ..... 1**  
 Supplemental DNR Attachments ..... 1

## Executive Summary

### Introduction

This document, the City of Lake City Parks & Recreation Master Plan, is intended to guide present and future recreational resource development within the city, including park land, park facilities, recreational programs, and public open spaces. The plan has been divided into a series of six sections.

The purpose of this document is to serve as a guide in planning future recreation opportunities for the City of Lake City. To be effective as a guidance tool, it has to be kept current, taking into account population shifts, development of new projects, and changing attitudes towards leisure activities.

Short-term goals, such as maintenance issues and small recreation facility improvements can be implemented quite easily with minimal costs. Long-term expansions/construction will require additional study and involvement of residents to work out the site-specific details. This plan is simply the foundation for these activities to occur. The focus of the plan is to identify the desires of residents and attempt to satisfy the recreation needs of the entire community.

Meeting the goals in this plan or revisiting the priorities as conditions change and/or funding opportunities arise will help in grant solicitation from the Michigan Department of Natural Resources (MDNR).

## Community Description

### Location & Historical Context:

Historical records indicate the area around Lake City was once the winter home of the Ottawa Indians. Pioneers and explorers started to settle in the area in 1868. Since it was founded on the eastern shore of Lake Missaukee, the City of Lake City continues to represent small town rural America. Early settlers were attracted to the area by the pristine water and abundant forests. Lumbering and its associated businesses (surveyors, sawyers, mills, and lumberjacks) thrived until the turn of the century. Then, like most neighbor communities, Lake City had to diversify. In 1873, the county seat was moved to Lake City from Falmouth. The first official plat of the area was recorded in 1874. Up until this time the community was known as Reeder (Lake Missaukee was called Muskrat Lake) but, by 1887, with a population of about 300. The turn of the century brought new sturdier buildings to replace the older ones, seasonal housing built near the lake, cement sidewalks in front of downtown businesses, a new telephone system, electric lights, and an expanded public water system. Lake City officially became a city in 1932. At about this time the recreational aspects of the community were beginning to attract tourists from more populated downstate areas.

Lake Missaukee attracts people to its shores, and ultimately to Lake City. Tourism has become a key component in the development of Lake City as not only a summer resort community, but more and

more as ' the place to stay' for fall color tours and harvest festivals, snowmobiling, cross country skiing, wild mushroom hunting, garden tours, and beautiful beaches.

The ultimate goal in the development of recreational facilities for Lake City is to preserve a small-town atmosphere, like picnicking on the park lawn while providing adequate, diverse, and unique opportunities for all to enjoy.

### Demographics:

When planning for the recreational needs, one of the most important components is to understand the demographics and the social make-up of the community. The City’s demographic data has been compared to Missaukee County and Lake Township to provide a broader picture of the social characteristics. Information from the 2020 United States Census Bureau offers an interesting picture of the City and of the community. It should be noted that the Census data does not reflect the actual number of persons residing or visiting the City during the summer months.

**Population** – The City of Lake City’s population is similar to the previous census conducted in 2010. While Lake City may be the same, the continuing growth of surrounding communities will increase the demand for both resident and tourist related recreational facilities in the area.

Jurisdiction	1990	2000	2010	2020
Missaukee County	12,147	14,478	14,849	15,551
Lake Township	1,980	2,468	2,800	2,893
City of Lake City	858	923	836	829

**Age** – The City and its surrounding area have healthy age distributions, containing substantial number of people in all age groups. This mix provides diversity and sustainability to the City, as well as creates a need to have recreational amenities that can serve everyone.

Age	Missaukee County	%	Lake Township	%	City of Lake City	%
Under 18 years	3,561	22.9%	495	17.1%	204	24.6%
18 years and over	8,786	56.5%	1,672	57.8%	434	52.4%
65 years and over	3,219	20.7%	726	25.1%	191	23.1%

**Gender** - The gender distribution in the City, County, and Township are relatively even between males and females. There are slightly more males than females throughout the three entities.

Jurisdiction	Male	Female
Missaukee County	7,884	7,667
Lake Township	1,487	1,406
City of Lake City	417	412

**Race** - The racial composition in the City, Township, and County is majority white.

Race	Missaukee County	%	Lake Township	%	City of Lake City	%
White	14,086	90.6%	2,677	92.5%	730	88.1%
Black	33	0.2%	6	0.2%	6	0.7%
Native American	71	0.5%	12	0.4%	12	1.4%
Hispanic or Latino	499	3.2%	66	2.3%	25	3.0%
Asian	46	0.3%	12	0.4%	3	0.4%
Native Pacific Island	1	0.0%	0	0.0%	0	0.0%
Two or more	616	4.0%	104	3.6%	43	5.2%
Other	199	1.3%	16	0.6%	10	1.2%

**Disabled Persons** - If park and recreation facilities are not barrier free, many of these residents will be limited in participating in recreational activities.

Population	Missaukee County	%	Lake Township	%	City of Lake City	%
Disabled Persons	2,799	18.0%	463	16.0%	135	16.3%

**Household Income** - All communities have a median household income slightly lower than the State.

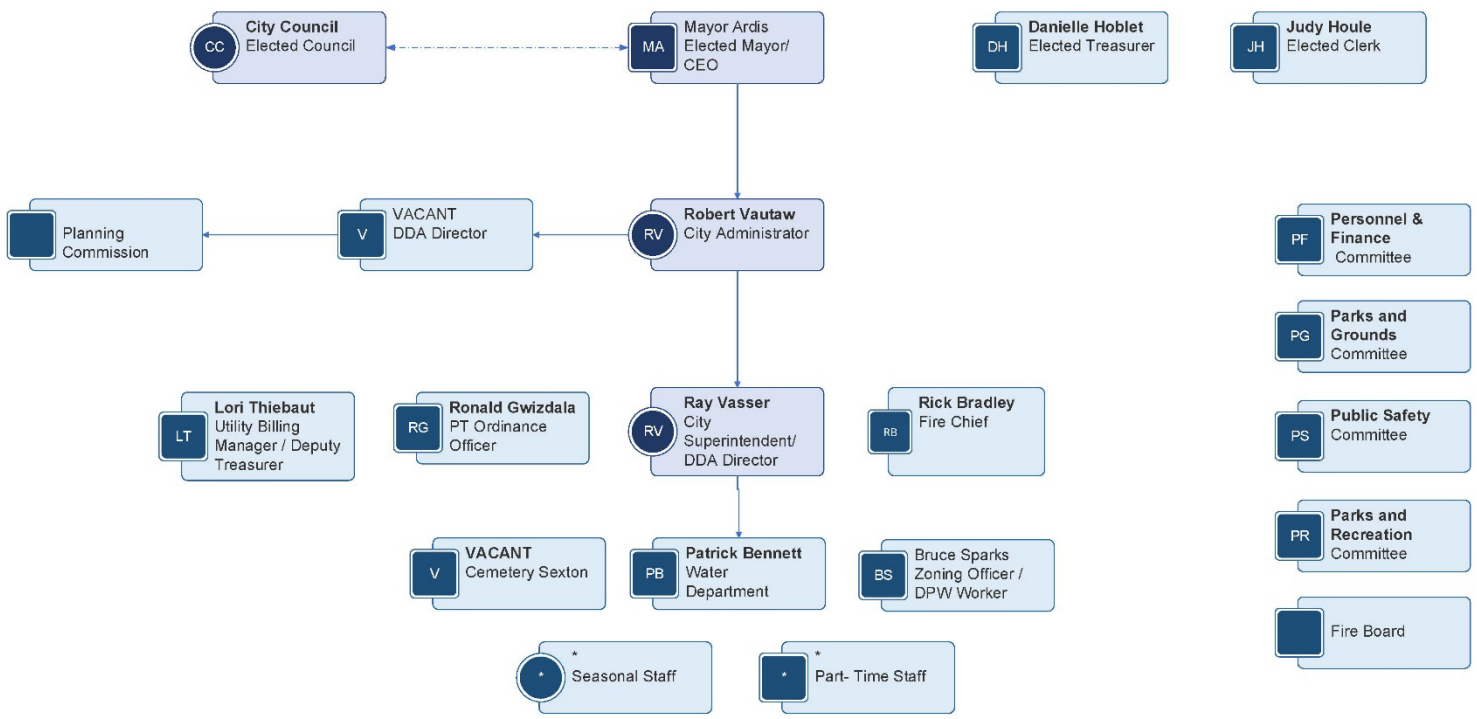
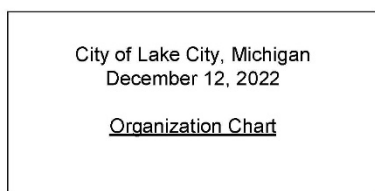
Jurisdiction	Median Household Income
Michigan	\$ 63,498
Missaukee County	\$ 47,370
Lake Township	\$ 52,550
City of Lake City	\$ 49,609

## Administrative Structure

The Parks and Recreation Committee is appointed by the mayor to supervise the development of a community recreation plan. Members are from the Parks and finance committees the Public Works Director, the County Planner, and the public at large.

The planning commission is appointed by the mayor. Members consist of the mayor, two Council persons, and members of the voting public. Duties include Zoning Administration, maintenance of the Zoning Ordinance, and a five-year plan for the city.

The Downtown Development Authority (DDA) is a tax increment finance board for development of the downtown area. Members are residents or property owners of the DOA district and are appointed by the mayor and ratified by the Council.



Public Act of 156 of 1917 authorizes the city to operate and maintain a system of public recreation and playgrounds. The Parks and Recreation Committee meets as directed by the mayor, pursuant to the development and maintenance of the Community Recreation Plan. Public input on the plan is reviewed, and recommendations made to the Parks Committee. This Committee recommends adoption of the plan to the City Council.

Coordination of utilities and parks is essential to successful projects for either parks or other recreational areas. Manpower from the Department of public works will be responsible for maintenance of all current and future projects. Present and future expansion of this labor force will be through the addition of seasonal labor.

Funding for park operations, maintenance, and capital development is part of the city budget developed by the Council. Some capital development projects are contingent on the acquisition of grant funding.

Present staff includes a full time Public Works Director, four full time DPW employees, and one to two seasonal employees. In addition, one part-time employee is hired to assist with maintenance of the City's parks. Work crews from the County Jail are also used to assist with park cleanup and maintenance, as they are available. The Mayor and City Council provide feedback to the City Administrator, who continually drives projects forward and supports programming along with the help of the City Superintendent.

## Relationships

### Relationships with Other Agencies

The City of Lake City works with various agencies and governmental units within the Missaukee County area to provide recreation for its residents, hence the collaborative effort between the City, Township, and County to help create this plan. One of the goals of this Community Recreation Plan is to increase cooperative efforts with Lake City Public Schools, Lake Township, and Missaukee County. Several recreation facilities are owned and maintained by either the school or the county. All these facilities are available for use by the residents of and visitors to the Lake City area. The City is constantly seeking opportunities to work collaboratively with area partners.

Park facilities and grounds are in platted areas with regulations governing their use. These regulations are part of the recorded plat and are on file with the county clerk's office. Each park in the different recorded plats has defined use regulations.

### Volunteers

The City is always looking out for new volunteer partners to help in any capacity possible. Volunteers currently assist with beautification projects throughout the city parks, planting flowers, maintaining the perennial beds, and support programming. This includes representatives from the Friendly Garden Club, Chamber of Commerce, the Kiwanis, the Woman's Club, and members of the public.



**Parks Budget and Funding**

**Parks & Recreation Annual Budget**

Lake City is dedicated to offering barrier free facilities that are safe and clean to all our residents and visitors. It has been determined that funds must be set aside for the purpose of improving facilities and making some of these areas safer and more user friendly.

**City of Lake City - General Fund  
Statements Of Cash Receipts And Disbursements  
For the 6 Months Ending September 30, 2022**

	<b>Actual 31-Mar-22</b>	<b>Amended Budget YE March 31, 2022</b>	<b>Actual YTD 30-Sep-22</b>
<b>Parks &amp; Recreation</b>			
Payroll, Taxes, & Withholdings	\$ 28,536.70	\$ 30,000.00	\$ 20,935.85
Christmas Decorating	\$ 451.16	\$ 500.00	\$ -
Contracted Services	\$ 3,744.64	\$ 4,000.00	\$ 3,526.00
Dues	\$ 126.00	\$ 1,240.00	\$ 310.00
Equipment Rentals	\$ 7,940.01	\$ 9,000.00	\$ 5,417.93
General Insurance	\$ 932.64	\$ 1,200.00	\$ 826.54
Health Insurance	\$ 5,523.18	\$ 6,000.00	\$ 2,319.77
Legal Advertisements	\$ 120.00	\$ -	\$ -
Miscellaneous	\$ -	\$ 100.00	\$ -
Milfoil	\$ 3,750.00	\$ 3,750.00	\$ -
Repairs & Maintenance	\$ 4,634.62	\$ 8,000.00	\$ 1,233.28
Retirement	\$ 551.36	\$ 500.00	\$ 481.02
Supplies	\$ 3,323.92	\$ 3,000.00	\$ 1,790.69
Telephone	\$ 2,681.49	\$ 2,500.00	\$ 1,462.52
Uniforms	\$ -	\$ 200.00	\$ -
Utilities	\$ 16,492.40	\$ 17,000.00	\$ 10,337.20
Workers Compensation	\$ 892.45	\$ 800.00	\$ 197.29
Capital Outlay	\$ 490,000.00	\$ 490,000.00	\$ 6,457.22
<b>Total Operating Expenses</b>	<b>\$ 569,700.57</b>	<b>\$ 577,790.00</b>	<b>\$ 55,295.31</b>

## Resource Inventory

### Recreation Inventory

The City of Lake City and their consultant, Prein & Newhof, conducted an extensive tour of the City and the recreational facilities located within its jurisdiction. This inventory includes brief descriptions of facilities operated by the township. The recreation facilities have been inventoried for park type, size, and service area. The facilities have also been evaluated for accessibility using the accessibility assessment criteria set forth by the Michigan Department of Natural Resources. The inventory listed is for all of Missaukee County. Recreational water activities are a major source of reaction so the City feels it was appropriate to list Lakes and Streams in the surrounding area. This inventory will help form the basis for planning of future facilities and programs in the County and City of Lake City.

### Community Recreation Planning

In a small county the size of Missaukee, programming for recreational activities can be expensive for many small groups to afford. Thus, the main burden of programming has fallen on the schools, both public and private, which have experienced staff and facilities and are better prepared for these types of recreation.

The school systems, while in session, are the main source of recreation provided to the county and city, the majority of which is directed towards school age children. Specific recreation skills, talents and proficiencies are developed in school because of its physical and cultural curriculums. A basic need is to extend these programs to other age groups who could also benefit from them without overtaxing the school systems. Lake City is served by the Lake City Area Schools, and some Lake City students attend Northern Michigan Christian School in McBain. The Wexford-Missaukee Intermediate School and Career Tech Center serve the Lake City Area Schools.

To the extent possible, programs should be created which meet the needs of all age groups in the county and in Lake City, and which utilize recreational facilities other than the schools. A good example of this is the programming carried on by the Senior Citizens Centers. The city would like to investigate providing more organized recreational planning and would like to begin that process by establishing a governance to oversee possible programming opportunities.

### Lakes and Streams

City of Lake City & Missaukee County residents as well as tourists have an extremely active interest in water related recreational activities. Approximately 4800 acres of inland lakes and many miles of excellent fishing streams provide an abundance of both warm and cold-water fishing. A majority of lakes in the county are self-sustaining and do not require stocking of fish to maintain sport fishing at a desired level, but stocking of Lakes Missaukee and Crooked as well as cold water streams is essential where the demand for fishing is high. In the past, a fish stocking program called McFish has successfully stocked Missaukee, Crooked and Sapphire Lakes with Walleye and Bass.

Both public and private boat-launching facilities are available at numerous lakes. The majority of the population has a lake suitable for fishing, swimming or boating within 10 miles of their residence. Canoeists have to travel farther to participate in their sport due to the location of the Manistee and Muskegon Rivers, the two most attractive canoeing rivers in the county, in relation to the majority of the population.

The County has over 3700 feet of public swimming beach footage. Swimming in natural waters surpasses all other forms of summer recreation except picnicking and camping. Lake beaches are one of the major attractions at most resorts and parks, demonstrating the importance of swimming as a recreational activity.

An inventory of lakes & streams in the county by name, location, size, and present use is seen below.

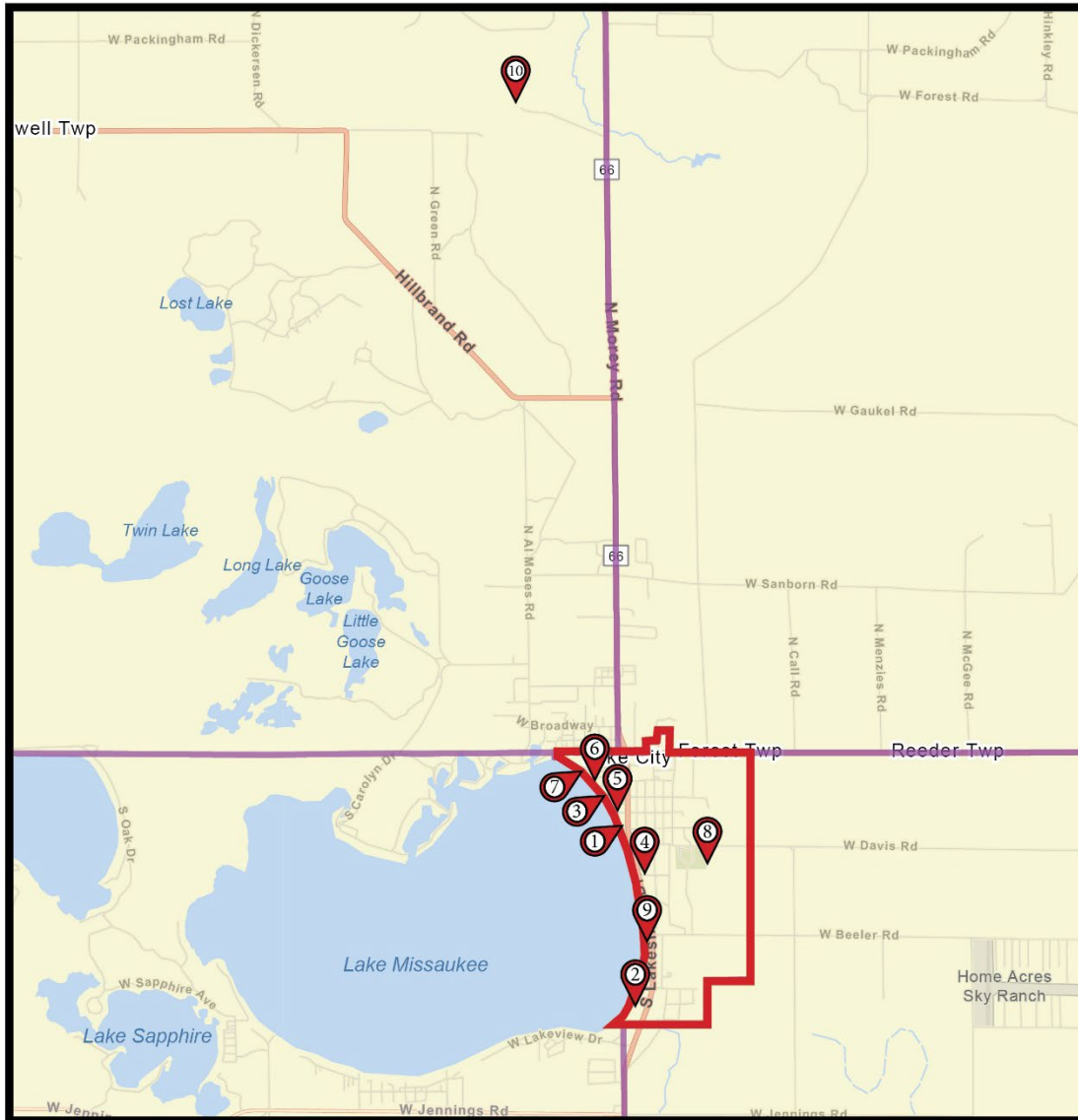
### Inventory of Streams - Missaukee County

NAME	Location (Township)	Fish Species
Addis Creek	Norwich	Brook Trout
Bear Creek	Holland	Brook Trout
Butterfield Creek	Reeder, Aetna, Butterfield	Brook & Brown Trout
Cannon Creek	Norwich	Brook & Brown Trout
Clam River	Lake, Reeder, Richland	Brook, Brown, Rainbow Trout
Dead Horse Creek	Butterfield	Brook Trout
Dead Stream Creek	Norwich, Enterprise	Brook, Brown, Rainbow Trout
Ham Creek	Bloomfield	Brook, Brown, Rainbow Trout
Haymarsh Creek	West Branch, Enterprise	Brook Trout
Manistee River	Bloomfield	Brook, Brown, Rainbow Trout, Walleye
Marks Creek	Richland, Riverside	Brook Trout
Middle Branch River	Riverside	Brook, Brown Trout
Mosquito Creek	Reeder, Riverside	Brook Trout
Muskegon River	Holland, Enterprise, Butterfield	Brown, Rainbow Trout, Walleye, Northern Pike And others
Stick Creek	Richland, Riverside	Brook, Brown, Rainbow Trout
Taylor Creek	Reeder	Brook Trout
Willow Run Creek	Norwich	Brook Trout
West Branch of Muskegon River	Butterfield, West Branch	Brook, Brown, Rainbow Trout

## Inventory of Lakes - Missaukee County

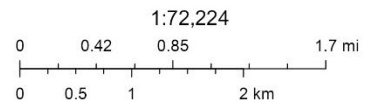
NAME	Location (Township)	Surface	
		Area (acres)	Use
Bear	Enterprise	31	Waterfowl, Public Access
Clear	Caldwell	29	No Public Access
Cranberry	Clam Union	130	No Public Access
Crooked	Lake	493	Public Access, Fishing, Campsites, Swimming, Hiking
Dyer	Clam Union	40	Public Access, Fishing, Campsites
Dyer	Caldwell	125	No Public Access
Goose	Caldwell	100	Public Access, Waterfowl. Fishing
Goose (Little)	Caldwell	37	Waterfowl, Public Access
Grass	E. Norwich	163	Waterfowl, Public Access
Long	Caldwell	60	Public Access, Fishing, Campsites, Boat Ramps, Swimming
Lost	Caldwell	31	No Public Access
Loon	Pioneer	21	Fishing, Swimming, Public Access
Missaukee	Lake	2002	Fishing, Swimming, Public Access, Boat Ramp, Camping, Boathouse
Reedsburg Dam	Enterprise	166	Fishing, Public Access, Waterfowl, Camping
Round	Lake	110	Fishing, No Public Access
Sapphire	Lake	264	Fishing, Public Access, Boat Ramp
Twin	Caldwell	143	Fishing, No Public Access
Whitlock	Caldwell	60	Fishing, Public Access, Camping

Overall City Parks Inventory Map



**Lake City Parks**

1. City Park
2. Englewood Road End
3. Lake Ave. Road End
4. Lake City Skate Park
5. Langley St. Road End
6. Lincoln St. Road End
7. Logan St. Road End
8. Maple Grove Park
9. Miltner Beach Park
10. Missaukee Ski Mountain

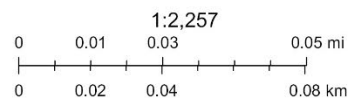


## City Park

**Size:** 1.7 Acres

**Location:** South side of the Lake City Services building property.

**Description:** City Park includes approx. 500 ft shoreline to Lake Missaukee, docks, recreational water access, green space, benches, and paved parking. There are currently plans in place to improve the entire park, see the Appendix for the concept plan. The proposed changes will add accessible sidewalks, a performance shelter, a splash pad, plaza space, outdoor dining, and green space over several phases.



## Road End Lake Access

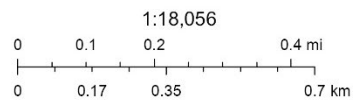
**Size:** n/a

**Location:** The end of Englewood Rd, Lake Ave, Langley St, Lincoln St, and Logan St along Lake Missaukee

**Description:** These road end parks allow all visitors and residents of the local neighborhoods an easy way to access/participate in recreational water activities.



- Road End Water Access**
- 1. Englewood Road End
  - 2. Langley St. Road End
  - 3. Lake Ave. Road End
  - 4. Lincoln St. Road End
  - 5. Logan St. Road End

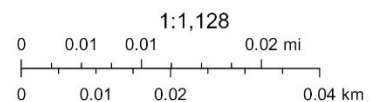


## Lake City Skate Park

**Size:** .66 Acres

**Location:** 304 S Canal St, Lake City, MI 49651. Just South of the Missaukee District Library.

**Description:** The site includes a skate park, tennis/ pickleball courts, concrete walkways, sitting areas, shade trees, and a basketball court.



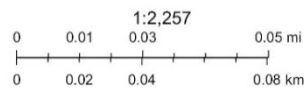
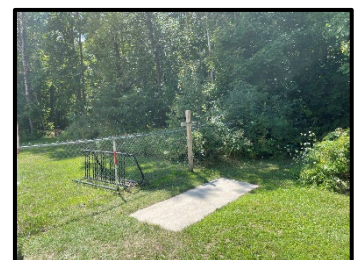


## Maple Grove Park

**SIZE:** 52 Acres

**Location:** West Union St, Lake City, MI 49651

**Description:** Maple Grove Park sits on 52 acres of land, consisting of mostly woods and green space. The north end accommodates mostly camping, with shelters, restroom buildings, open green space, and a ball field. The rest of the property to the south has an 18-hole disc golf course with concrete launch pads and signage.

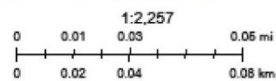


## Miltner Beach Park

**SIZE:** 3.9 Acres

**Location:** 1,500 ft of shoreline west side Lakeshore Dr. along Missaukee Lake.

**Description:** The beach has 1,500 ft of shoreline for people to enjoy swimming, relaxing, or water sports. A boardwalk runs along the entire beach allowing easy access for all visitors. There's a fishing overlook located next to the paved parking lot.



## Missaukee Ski Mountain

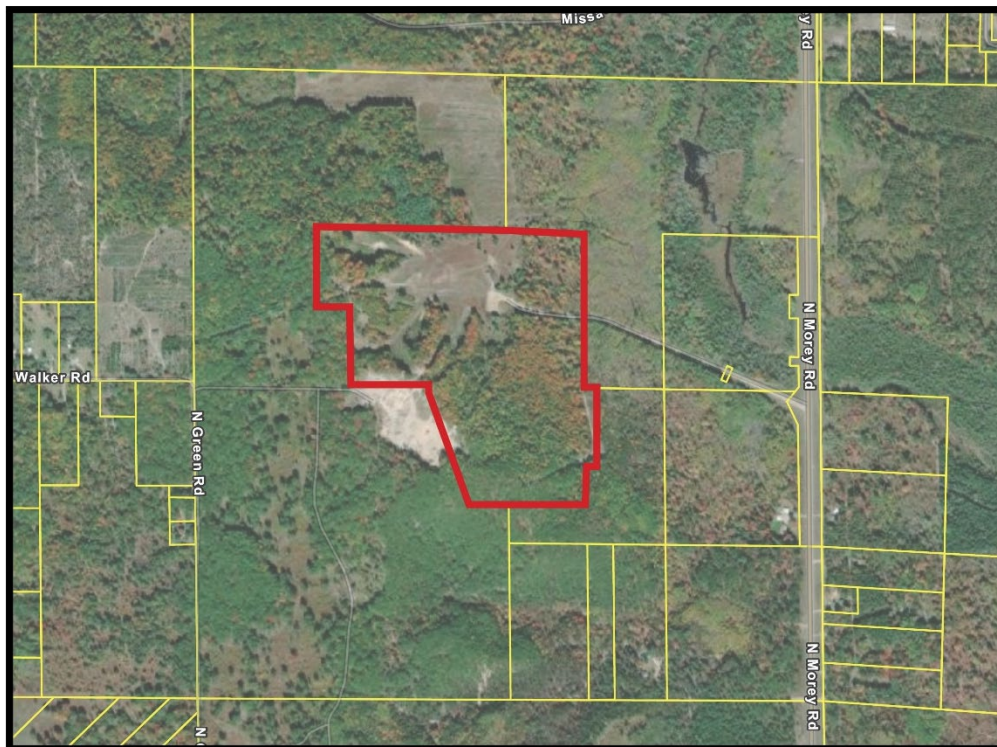
**SIZE:** 93.5 Acres

**Location:** 6500 W Walker Rd, Lake City, MI 49651

**Description:** Located 3.5 miles north on M-66. Missaukee Mountain is open on the weekends and all of Christmas break, depending on snow conditions. It currently offers a bunny mound, beginner runs, intermediate slopes, expert challenges, and moguls with 3 tow ropes. The mountain also has more than five miles of cross-country trails. Snowboarding is welcome. Downhill, and cross-country ski equipment is available for rent on site. A sledding hill is also available (BYO sleds or tubes). A main lodge with common area and public restrooms, and lite concessions is located on site.

The Missaukee Mountain Ski Club was built by volunteers and donations from the community to include a set of tow ropes, a lodge, and groomed trails. For many years, the Mountain hosted events for Winter Festival, including the coronation of the first Festival Queen in 1956.

Seventy-seven years later, Missaukee Mountain is still overseen and operated by volunteers and relies on the generous financial support of the community. Lift passes and rental equipment costs are kept low so skiing and riding are affordable for kids of all ages. Tubing, cross-country skiing, and the lodge are open to the public at no charge.



### City Parks and Recreation Resources

Name	Type	Acres	Accessibility Rating	Amenities
City Park	Community Park	1.7	2	Paved Parking, Picnic Tables, Dock
Englewood Road End	Special Use	n/a	1	Water Access, Gravel Parking, Waste Bin
Lake Ave. Road End	Special Use	n/a	1	Water Access, Waste Bin
Lake City Skate Park	Special Use	.66	3	Paved Parking, Skate Park, Tennis/ Pickleball Court, Picnic Tables
Langley St. Road End	Special Use	n/a	1	Water Access, Waste Bin
Lincoln St. Road End	Special Use	n/a	1	Water Access, Paved Parking, Picnic Tables, Waste Bin
Logan St. Road End	Special Use	n/a	1	Water Access, Gravel Parking, Waste Bin
Maple Grove Park	Campground/ Public Park	52	1	Camping, Restroom Building, Disc Golf, Playground
Miltner Beach Park	Community Park	3.9	3	Paved Parking, Lake Access, Boardwalk, Fishing Dock
Missaukee Ski Mountain	Special Use	93.5	1	Parking Area, Cross-Country Skiing, Downhill skiing and snowboarding, Tow Ropes, Restroom/ Concessions

Accessibility Scores:

- 1 = None of the facilities/ park areas meet accessibility guidelines
- 2 = Some of the facilities/ park areas meet accessibility guidelines
- 3 = Most of the facilities/ park areas meet accessibility guidelines
- 4 = The entire park meets accessibility guidelines
- 5 = The entire park was developed/renovated using the principals of universal design

## Planning Process

### Public Input

The City of Lake City values the opinions and views of its residents and helped develop the following process to gather the community's thoughts by:

- The consultant, Prein & Newhof, worked with the Lake City over the course of several months via phone, email, and face to face meetings.
- Making digital and hard copies of the survey available to all residents that asks specific questions of the current parks and their goals for the future.
- The Draft Plan was made available for public for 30 days to allow for public comment.
- A joint open house with Lake Township & Missaukee County was held on Dec. 21<sup>st</sup> to allow for in person public comment.
- Held a public hearing prior to adopting the park plan on 1/9/2023.

### Survey Summary Results

The parks and recreation survey was available from Sept. 26<sup>th</sup> 2022 to Oct. 26<sup>th</sup> 2022. The public notice for the survey was posted in the Missaukee Sentinel and contained a QR code to the survey along with several locations of where to find/submit hardcopies. There was a total of 120 online responses to the survey. A vast majority of responders reside in the 49651 zip code (61%), are 55+ years old (58%), and prefer to be receive information through websites (55%), social media (50%), and email/newsletter (44%).

67.5% of responders are not concerned with the park systems within Lake Township continuing to grow. Of the 32.5% that are concerned, the most reoccurring comments are:

- Fees and taxes being increased
- Possibility of tourists polluting
- Higher chance of vandalism

The top 3 barriers making it difficult to visit local parks (including public comments):

- Lack of time
- No people to participate with
- Too many obligations
- Lack of organized programming
- No public awareness of the parks system

The top things residents **like** about the existing recreational facilities are:

- The pickleball courts.
- Close to home and easily accessible.
- Everything is clean and well maintained.
- Everything can be enjoyed with friends and family.
- Water access and views.

The top things residents **do not like** about the existing recreational facilities are:

- Lack of non-motorized trails
- Lack of designated dog areas
- Lack of organized leagues
- Some parks are worn-out and need updating, includes restroom buildings
- Camping availability fills up fast and is hard to secure

Top 3 most visited parks:

- Missaukee Lake Park
- City Park
- Miltner Beach Park

Top 3 reasons why people engage in recreation:

- Close to home
- To be with family and friends
- To have fun

Top 5 recreation opportunities

- Paved multi-purpose trails for non-motorized activities
- Festival and concert venue
- Non-paved multi-purpose trails for non-motorized activities
- Fire pit w/ seating
- Picnic areas

Top 5 most needed recreational opportunities:

- Trail/ pathway systems connecting to neighborhoods & communities
- Child recreation opportunities
- Natural areas
- Adult recreation opportunities
- Exercise opportunities

Feedback regarding the four acres of land on Crooked Lake in Jennings received 55 responses from the public. The most popular Ideas are:

- Dog Park
- More campsites
- Swimming beach and recreational water access
- Walking trails
- Picnic area with pavilion, firepits, and playgrounds

Only 34% of responders believe there is a group of residents that would benefit from additional recreational opportunities. The comments given represent all age groups from children to seniors.

## Goals and Objectives

The information received from the public survey was reviewed, calculated, and analyzed to identify the communities' goals and objectives. The Lake City residents who participated in the survey have provided valuable feedback regarding their wishes and desires for the recreational facilities and activities within the City. The following goals and objectives were formulated based on the total number of surveys that were filled out.

**Goal 1: Improve existing Lake City parks and recreation facilities and programs to provide adequate opportunities for year around recreation for all members of the Community including the children, the elderly, and the disabled.**

### Objectives: Establish Recreation Programming

- Establish governance for recreation programming such as sporting leagues or community clubs.
- Explore the possibility of creating recreational opportunities such as ballfield/ play areas for recreation programs.
- Partner with other local communities and work with park professionals to help establish programming.

### Objectives: Improve Road End Lake Access Points

- Add accessible features such as barrier free parking, barrier free water access, and barrier free amenities.
- Add designated parking areas where possible.

### Objectives: Improve City Park

- Implement the park master plan developed with Beckett&Raeder and Prein&Newhof through several phases.
- Look to apply for grants to help fund phases.

### Objectives: Improve Lake City Skate Park

- Provide barrier free access to existing nearby parking
- Improve the surfacing for the tennis/pickleball courts
- Improve barrier free accessibility within the site.

### Objectives: Improve Miltner Beach Park

- Maintain/ renovate the existing boardwalk to allow for barrier free accessibility.
- Provide accessible seating areas and beach access along the boardwalk.
- Add a barrier free overlook/ fishing dock.

**Objectives: Improve Maple Grove Park**

- Provide barrier free access to the existing restroom building.
- Renovate/expand the existing playground to accommodate more age groups and skill levels.
- Pave the drive entrance/ parking for the camping and ballfield areas.
- Improve the signage for the disc golf course.

**Goal 2: Provide non-motorized connections (Designated Walking Areas and Bike Paths) to and within recreational facilities, schools, and residential areas in order to provide a safe, pleasant, and satisfying recreation experiences.****Objectives:**

- Construct or expand designated bike paths throughout the City where possible.
- Develop bike paths that would connect multiple existing City Parks where possible.
- Work with the road commission / MDOT to incorporate widened shoulders.
- Construct or expand designated walking areas that would provide greater resources for the whole community, including senior citizens, school children, and those interested in fitness or a leisurely walk.
- Explore the possibility of connecting with other regional trail networks where possible

**Goal 3: Look for opportunities to acquire more land in the City for recreation while the property is still undeveloped, available, and affordable.****Objectives:**

- Explore the possibility of expanding existing park facilities.
- Consider purchasing land within the city boundaries to develop new parks or non-motorized paths.

**Goal 4: Improve overall accessibility within Lake City parks.****Objectives:**

- Work with park professionals for the planning & designing future park projects.
- Consult with local disability groups to make sure future parks and programs meet accessibility standards.
- Renovate existing park features to be barrier free and more accessible.



## Action Program

Through the knowledge of the Parks Board along with the input provided by the public survey it is apparent that the residents in The City of Lake City support park improvements/expansion, and love having the parks system. Although recreational programming, non-motorized trails, and designated walking paths is a high priority and will continue to be, park improvement and expansion are important as well.

### Communications

According to the survey results, the public prefer to be contacted through E-mail/Newsletter and through the website. The City is planning to continue to improve all communication methods with a focus on digital means.

### Park Development

According to the survey 67.5% have no concerns regarding the development or expansion of the parks system as it continues to grow. The most important park developments and new activities that the City will look to expand upon include: more walking paths, more camping areas, barrier free recreational water access, and possibly a dog park. City park is getting more and more use and plans are currently underway to improve the park so that it can accommodate the multiple uses and roles it needs to fill.

### Trail Development

The trail system in Lake City needs to be improved and expanded. The survey shows the people consider expanding non-motorized and motorized pathways to be the main priority going forward. Ideally the City wants to create more trails in general and for them to connect to places of interests. The priorities will include connecting residential areas to parks and being able to connect to existing regional trail networks nearby.

### Accessibility

The City needs to address barrier-free accessibility in nearly every area of our Park system. As a prime recreational area and a retirement destination, we feel that providing ADA access to our beaches and camping areas is of the utmost importance. Miltner Beach currently has an aging barrier free boardwalk running the length of the beach with accessible fishing docks, and accessible swimming areas in the City, but there's always room for improvement.

# APPENDICES

## **Appendix A**

### **Supplemental DNR Attachments**

**Survey Results**

**Grand Central Park Concept Plans**

**Public Notices**

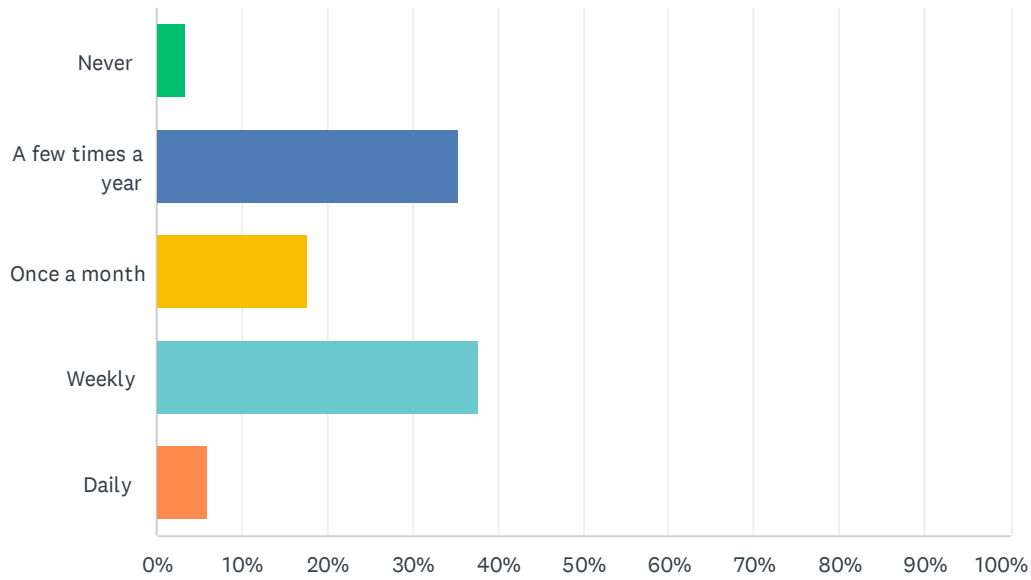
**Joint Open House Photos**

**Public Meeting Agenda / Minutes**

**Formal Resolution to Adopt the Plan**

## Q1 How often do you or someone in your household engage in a Missaukee County Parks and Recreation activity, such as visiting a local park, or attending a community program?

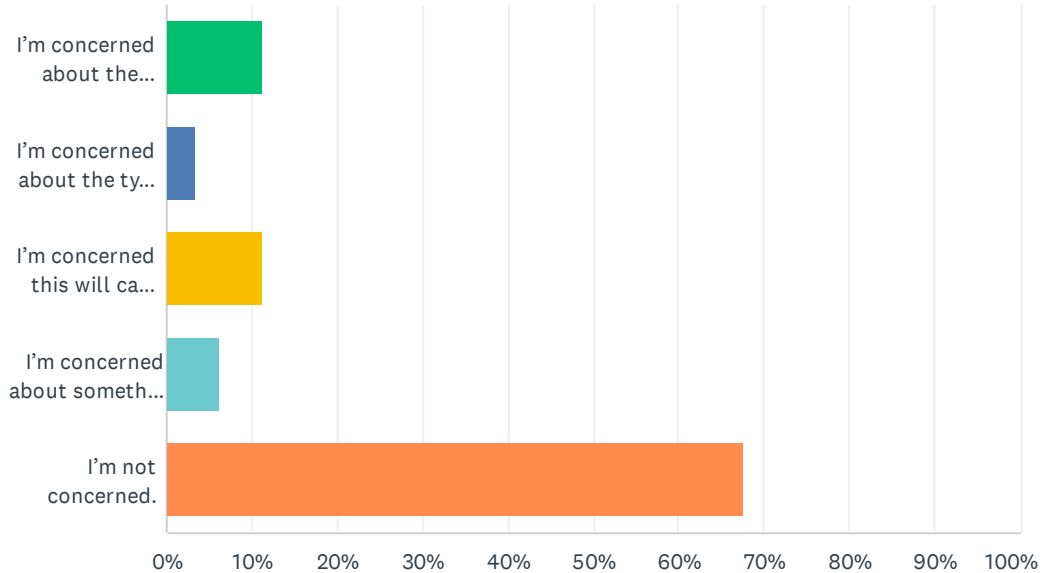
Answered: 119 Skipped: 1



ANSWER CHOICES	RESPONSES
Never	3.36% 4
A few times a year	35.29% 42
Once a month	17.65% 21
Weekly	37.82% 45
Daily	5.88% 7
<b>TOTAL</b>	<b>119</b>

## Q2 As the park systems within Missaukee County expand and grow, what areas of concern to you have? Please explain below.

Answered: 114 Skipped: 6



ANSWER CHOICES	RESPONSES
I m conce ned about the f nanc a mpact that t wi have on me. (Expla n)	11.40% 13
I m conce ned about the type of p og ams that m ght be offe ed. (Expla n)	3.51% 4
I m conce ned th s wi cause unwanted consequences. (Exp ain)	11.40% 13
I m conce ned about someth ng e se. (Exp a n)	6.14% 7
I m not conce ned.	67.54% 77
<b>TOTAL</b>	<b>114</b>

#	EXPLAIN	DATE
1	M ssaukee County s a fou -season dest nat on and p ace to offe ou c t zens d ve se cho ces fo the use.	10/24/2022 3:31 PM
2	W th the county pa k chang ng new u es a ot of campe s a e ve y upset that they a e tak ng away with seasonal camp ng wh ch br ngs a ot of evenue to ou sma bus nesses.	10/20/2022 12:53 PM
3	Mo e peop e from down state com ng up and po ut ng more of ou and, st eams and wate with fumes, garbage, nvas ve spec es, and mo e t oub ed peop e, and the fees go ng up o peop e that ve here, not k ng the fact that 4 whee e s and such ab e to be d iv ng on ou oads, not fo owing u es o the oad, t espasse s	10/17/2022 11:40 AM
4	Safety of wa k ng t a s	10/16/2022 9:01 PM
5	I'm conce ned about vanda sm f not ut zed.	10/16/2022 11:16 AM
6	I d ke to see mo e natu e t ai s to wa k.	10/16/2022 10:53 AM
7	It wi become comme c al zed	10/15/2022 5:14 PM

## 5 Year Parks & Recreation Master Plan Survey

8	Traffic, noise, vandalism	10/14/2022 9:43 PM
9	I would like to be a part of the development team! I have had a desire to bring a recreational center to Missaukee county for several years, and want to be engaged in any possible way	10/14/2022 4:16 AM
10	I am hopeful for more NON motorized trail system. IE: hiking biking and horseback, I am not thrilled with the side-by-side traffic especially on M55 where is should not be.	10/13/2022 9:29 PM
11	Using moneys that are needed for Lea enforcement and road maintenance	10/13/2022 6:15 PM
12	Will there be a tax assessment	10/9/2022 7:30 PM
13	I think this make a huge impact on the community is a positive way.	10/6/2022 10:40 AM
14	are taxes going to go up	10/5/2022 6:20 PM
15	I just want them to be expanded; no concerns.	10/4/2022 3:22 PM
16	The town is busy enough in the summer. This will just bring more people here, and make it congested.	10/4/2022 9:21 AM
17	As with anything money spent in recreation takes away from critical infrastructure in the county. So it tis imperative that we find a balance between expenditures for both.	10/4/2022 7:20 AM
18	Will there be a wide array of programs that will meet the needs,and interests, of a broad age range?	10/3/2022 3:47 PM
19	the new ideas will be closely monitor for the betterment of the park	10/3/2022 12:14 PM
20	I think this will be a never to the community if done well.	9/30/2022 11:58 AM
21	Local people will have problems using parks we pay for	9/30/2022 11:00 AM
22	Would like updated pickleball courts and a bike path around lake. Very dangerous to ride bike on Jennings Road. I have been run off road several times.	9/30/2022 10:45 AM
23	Recreation facilities are an enhancement to our town.	9/30/2022 10:41 AM
24	I'm concerned that a balance be attained between increasing usage and effects upon our waters, lands, and roads. Our natural resources need to be protected against invasive species and destruction through overuse.	9/29/2022 10:18 AM
25	i think the expansion of local parks and recreation areas and facilities will only be a benefit to the area.	9/29/2022 9:19 AM
26	very little involvement from my family	9/28/2022 9:37 AM
27	I am concerned about additional stress on Lake Missaukee. We have 4 invasive species affecting the health of the lake. Most of these have come in through the County Park boat launch.	9/28/2022 9:03 AM
28	Fees will be increased	9/27/2022 7:30 PM
29	Will it raise taxes.	9/27/2022 12:31 PM
30	The Green Rd boat launch and Lagoon launch are very shallow and desperately need to be dredged out, especially Green Rd.	9/26/2022 11:07 PM
31	It already has. I'm a seasonal camper at the county park. Not sure I'll get a spot next season	9/26/2022 9:15 PM
32	Growth means increased costs, which means increased taxes and fees. You have no money other than ours.	9/26/2022 6:20 PM
33	Maintence or lack there of on current facilities	9/26/2022 3:04 PM
34	Miltner board walk	9/26/2022 3:00 PM
35	More transient campers in the county parks will cause issues for other campers as well as the city and county.	9/26/2022 12:03 PM
36	Will it increase property taxes?	9/26/2022 11:43 AM
37	More exposer to drugs and crime from down state and local criminals	9/26/2022 10:52 AM

### Q3 What do you like about the existing recreation facilities in your area?

Answered: 86 Skipped: 34

#	RESPONSES	DATE
1	That our county offers several activities/athletics mostly during the summer.	10/24/2022 3:31 PM
2	I like that they are improving our county park with new docks and improvements like cutting down trees that need to be cut cause of danger to the park campers.	10/20/2022 12:53 PM
3	The size of the parks	10/17/2022 11:40 AM
4	The disc golf course that can be walked on	10/16/2022 9:01 PM
5	A place to walk dogs	10/16/2022 8:34 PM
6	Close to home & clean.	10/16/2022 11:16 AM
7	The disc golf course offers a place to safely walk on trails, but it would be nice to have a maintained trail for walking and hiking that was solely for that purpose.	10/16/2022 10:53 AM
8	Pickle all court	10/16/2022 8:48 AM
9	It's all local people working helping	10/15/2022 5:14 PM
10	Very nice beach and campgrounds.	10/14/2022 7:28 PM
11	They're a place for the kiddos to unwind. Lake access with picnic facilities and boat mooring	10/14/2022 3:48 PM
12	Overall I believe the parks that I visit are well maintained and I feel that is extremely important.	10/14/2022 3:39 PM
13	We enjoy watching the little kids play tball at the park	10/14/2022 2:24 PM
14	The walking track and work out facilities at LC High school are especially beneficial during the winter to all LC residents	10/14/2022 2:13 PM
15	Simply that they exist and provide a place close to home to take my kids.	10/14/2022 1:23 PM
16	Affordability	10/14/2022 12:17 PM
17	Pickle ball courts are great. Small skatepark is fun for kids. I'd love to see more public recreation along the lake to tie lake and town together.	10/14/2022 8:30 AM
18	Accessibility	10/14/2022 8:23 AM
19	More available camping	10/14/2022 7:33 AM
20	The majority of what is available is easily accessible and generally clean and well maintained.	10/14/2022 7:26 AM
21	We like the disc golf course, the county park in Lake City, and the skate park. Also we love the park in Merritt..	10/14/2022 7:17 AM
22	Public beaches and playground, 4th of July activities, festival of the pines, swim lessons in the lake	10/14/2022 6:28 AM
23	There are not many to compare	10/14/2022 4:16 AM
24	Community center at the high school	10/14/2022 2:35 AM
25	The Green Rd. boat ramp is close my home so I can launch my kayak there. We swim occasionally at the beach on Englewood. It's a nice quiet beach.	10/13/2022 9:54 PM
26	I enjoy the areas I can horseback ride, they are always clean.	10/13/2022 9:29 PM
27	clean easy access	10/13/2022 8:25 PM
28	Easily accessible	10/13/2022 6:22 PM

## 5 Year Parks & Recreation Master Plan Survey

29	Beautiful park	10/13/2022 5:54 PM
30	This is for crooked lake .. I love it here. Been here since I was a teenager . We bring our granddaughter here	10/9/2022 7:30 PM
31	campgrounds and city park	10/5/2022 6:20 PM
32	The access to the lake, views.	10/5/2022 11:13 AM
33	Kids/families can enjoy playground equipment	10/4/2022 6:05 PM
34	They are generally well-kept and accommodate small and large groups.	10/4/2022 3:22 PM
35	Being able to fish at the lagoon at the Missaukee County Park	10/4/2022 9:27 AM
36	right on the water for the county park, perfect spot.	10/4/2022 9:21 AM
37	The easy access. They are clean.	10/4/2022 8:07 AM
38	Access to lakes and trails in our county is as good or better than anywhere	10/4/2022 7:20 AM
39	Cost, cleanliness, and accessibility.	10/3/2022 3:47 PM
40	it draws in visitors, the programs will grow	10/3/2022 12:14 PM
41	I like the variety of waterfront facilities and access	10/1/2022 10:41 PM
42	There is a Pickleball court	10/1/2022 9:16 AM
43	Playground at beach	10/1/2022 7:45 AM
44	Accessibility is easy, such as boat launch and tennis / pickleball courts	9/30/2022 6:28 PM
45	Tennis courts	9/30/2022 6:22 PM
46	Pickelball courts	9/30/2022 5:13 PM
47	Pickle ball courts	9/30/2022 5:13 PM
48	Pickleball courts, large beautiful well kept beach,	9/30/2022 5:11 PM
49	The swim program, pickle ball courts, clean beaches.	9/30/2022 3:34 PM
50	Open to the public. Generally clean and well cared for.	9/30/2022 11:58 AM
51	For the most part they seem to be well maintained and enjoyed by many people.	9/30/2022 11:08 AM
52	Clean and cheap	9/30/2022 11:00 AM
53	I use pickleball courts	9/30/2022 10:45 AM
54	Pickelball courts and boat ramp	9/30/2022 10:41 AM
55	It's important for a strong community to offer recreation facilities. It's great for everyone (kids, families, seniors).	9/30/2022 10:27 AM
56	Close to home	9/30/2022 9:42 AM
57	Access	9/29/2022 10:30 PM
58	Camping, High School	9/29/2022 8:58 PM
59	Available and affordable	9/29/2022 10:18 AM
60	things seem to be clean and well maintained.	9/29/2022 9:19 AM
61	The lake	9/29/2022 7:00 AM
62	I think that the residents of the Lake City area are very lucky to have many parks that all vary.	9/28/2022 7:34 PM
63	The lake beachfront, the playground, the camping facilities. The swim program.	9/28/2022 11:44 AM
64	I like the beach area along with the play ground area	9/28/2022 10:02 AM
65	The park is now kept up and and inviting	9/28/2022 9:37 AM



## 5 Year Parks & Recreation Master Plan Survey

66	It is great to have beach access for swimming.	9/28/2022 9:03 AM
67	Convenience	9/27/2022 7:30 PM
68	Pickelball courts	9/27/2022 2:50 PM
69	Great place to take family and friends.	9/27/2022 12:02 PM
70	We love camping at Crooked Lake, have especially loved the times we can secure a seasonal site although that was very difficult and time consuming.	9/27/2022 11:15 AM
71	I love Green Road boat launch. I love the public small beaches at the end of the roads.	9/27/2022 10:20 AM
72	Clean	9/27/2022 4:52 AM
73	Staff is friendly	9/26/2022 11:07 PM
74	I love the park at the lake and the beach.	9/26/2022 10:26 PM
75	How close it is to town	9/26/2022 9:15 PM
76	I love the beach and playground and amount of room there is for the kids to play	9/26/2022 9:12 PM
77	Do not utilize.	9/26/2022 6:20 PM
78	Great variety and amenities	9/26/2022 4:58 PM
79	THE NATURE - TREES/FLOWERS ETC	9/26/2022 4:48 PM
80	Easily accessible	9/26/2022 4:25 PM
81	gives kids a place to play	9/26/2022 3:22 PM
82	Lakes	9/26/2022 3:04 PM
83	Family atmosphere	9/26/2022 12:03 PM
84	It's quite	9/26/2022 11:43 AM
85	Well the Co Park system is all about the McBain folk and trolls.	9/26/2022 10:52 AM
86	Natural and outdoor recreational opportunities	9/26/2022 10:26 AM

## Q4 What do you not like about the existing recreation facilities in your area?

Answered: 83 Skipped: 37

#	RESPONSES	DATE
1	Our county is a gem for people to gather with the four-season environment - work to make COORDINATED four-season offerings/fun for both residents and visitors.	10/24/2022 3:31 PM
2	I think we need to make a community bathroom facilities in and around the downtown area.	10/20/2022 12:53 PM
3	All the pollution that all the boaters and jet skis and invasive species are causing in our waters	10/17/2022 11:40 AM
4	Lack of non-motorized walking trails	10/16/2022 9:01 PM
5	Not enough maintained walking trails, unmoterized	10/16/2022 8:34 PM
6	Not enough places to walk in nature areas that are just for walking in nature and not orvs or disc golf. The nature trails at the MSU center are very short and too close to the shooting range in places. It would be nice to have a system of maintained hiking trails.	10/16/2022 10:53 AM
7	County boat ramp	10/16/2022 8:48 AM
8	How they do business	10/15/2022 5:14 PM
9	To many seasonal sites at county campgrounds. Locals can't get in for a weekend if they don't book a site way in advance.	10/14/2022 7:28 PM
10	Too much local traffic with concerns about noise and inability for some people to not pickup debris and leave the area clean.	10/14/2022 3:48 PM
11	The baseball diamond at the county camp ground park near AL Moses road needs to be dragged or cultivated with a tractor. It is completely overgrown with weeds.	10/14/2022 3:39 PM
12	As a vacation home owner, I do not have great knowledge of the facilities that are available, beyond the festivals.	10/14/2022 2:34 PM
13	We need more fishing areas for families who do not have access to a boat. There are not enough locations	10/14/2022 2:24 PM
14	Would be nice to be able to get snacks, hotdogs etc., at the beach as well as rafts and slides in the water to use.	10/14/2022 2:13 PM
15	Limited activities and equipment available for people of all ages.	10/14/2022 1:23 PM
16	Aged	10/14/2022 12:17 PM
17	There is not enough space. The locals take the majority of the space most of the year. Plus there is no room by the boat launch.	10/14/2022 9:13 AM
18	None	10/14/2022 8:30 AM
19	I wish the Bath House Museum was open throughout the year, as I tend to want to participate in activities indoors during colder weather.	10/14/2022 8:23 AM
20	Unable to go camping	10/14/2022 7:33 AM
21	There seems to be a lack of parks centered around outdoor activities other than sports	10/14/2022 7:26 AM
22	Wish there were more outside of Lake City. A disc golf course or something else would be nice in Merritt.	10/14/2022 7:17 AM
23	N/A	10/14/2022 6:28 AM
24	Lack of recreation & family activities	10/14/2022 4:16 AM

## 5 Year Parks & Recreation Master Plan Survey

25	Un-user friendly city dock in Lake City	10/14/2022 2:35 AM
26	I would like some nice trails to walk.	10/13/2022 9:54 PM
27	Limited areas for dogs	10/13/2022 9:29 PM
28	Often overcrowded	10/13/2022 6:22 PM
29	That you are trying to exclude property owners from priority of	10/13/2022 5:54 PM
30	I dont like you have to pay a day pass to go to missaukee country park . Being a resident	10/9/2022 7:30 PM
31	the changes happening to our campground implementing state park rules	10/5/2022 6:20 PM
32	Updating needed. No designated dog beaches.	10/4/2022 6:05 PM
33	I'd love to see some hiking and biking paths.	10/4/2022 3:22 PM
34	Missaukee County Park hasn't been updated in what seems like a very long time.	10/4/2022 9:27 AM
35	That it is not fair and all of Mcbain parks their campers there year round to have a place at the lake with all their buddies and no one else can get in. needs to be a stay limit.	10/4/2022 9:21 AM
36	Often times accomodations for busy times is not adequate	10/4/2022 7:20 AM
37	Would love to see a bit more oversight; I.e., security and monitoring. Would also like to see more handicapped accessibility.	10/3/2022 3:47 PM
38	the visitors not being courtesy of other people's property and abiding by the rules and laws	10/3/2022 12:14 PM
39	Bathroom facilities could be improved	10/1/2022 10:41 PM
40	There is only one Pickleball court	10/1/2022 9:16 AM
41	Stairs to beach are hard to manage	10/1/2022 7:45 AM
42	Tennis courts are in desperate need of resurfacing	9/30/2022 6:28 PM
43	Nothing , all good	9/30/2022 6:22 PM
44	Worm out	9/30/2022 5:13 PM
45	I do not like that Ben Jeff's Park needs some up keep, and the County seems to ignore that park. It is a very nice park, always looks nice, and alot of people stop there.	9/30/2022 4:20 PM
46	Not enough programming for kids in summer. Lack of coordination between groups.	9/30/2022 3:34 PM
47	Lake of bicycle routes	9/30/2022 11:58 AM
48	Not sure	9/30/2022 11:08 AM
49	Sometimes parks get undesirables	9/30/2022 11:00 AM
50	We need safe bike paths.	9/30/2022 10:45 AM
51	None	9/30/2022 10:41 AM
52	I like all things about the existing facilities and hope they are expanded.	9/30/2022 10:27 AM
53	We didn't like the fact that Crooked Lake had rustic site season renters, leaving nothing available for locals on the weekends	9/30/2022 9:42 AM
54	Poor mantanance	9/29/2022 10:30 PM
55	Availability	9/29/2022 8:58 PM
56	It would do the county good to add noticable signage so everyone knows where these parks are and that they feel welcome to stop even if for a couple hours. Though I have not camped at either park we do use missaukee county park and it was disappointing to hear that seasonal campers who have been faithful goers year over year and who have chosen to spend their money in our little city again and again (vital to small businesses) are no longer given the "seniority" of renting the same site. It's like saying we don't value them and their business. Sometimes convenience and familiarity is the reason for packed campgrounds from seasonal renters. Take that away and they no longer have incentive to return. Year round residents of	9/29/2022 9:37 AM

## 5 Year Parks & Recreation Master Plan Survey

missaukee county typically will travel outside of their residential area to vacation. The ones that stay local are those who typically pull in or pop a tent for a night or 2. Most often it is occupied by young people and who use the time to "party" if this is favored over those seasonal and faithful campers who spend countless dollars in our county and take great care of facilities they use them certainly the monies soon invested for the improvements will unfortunately not reap the return.

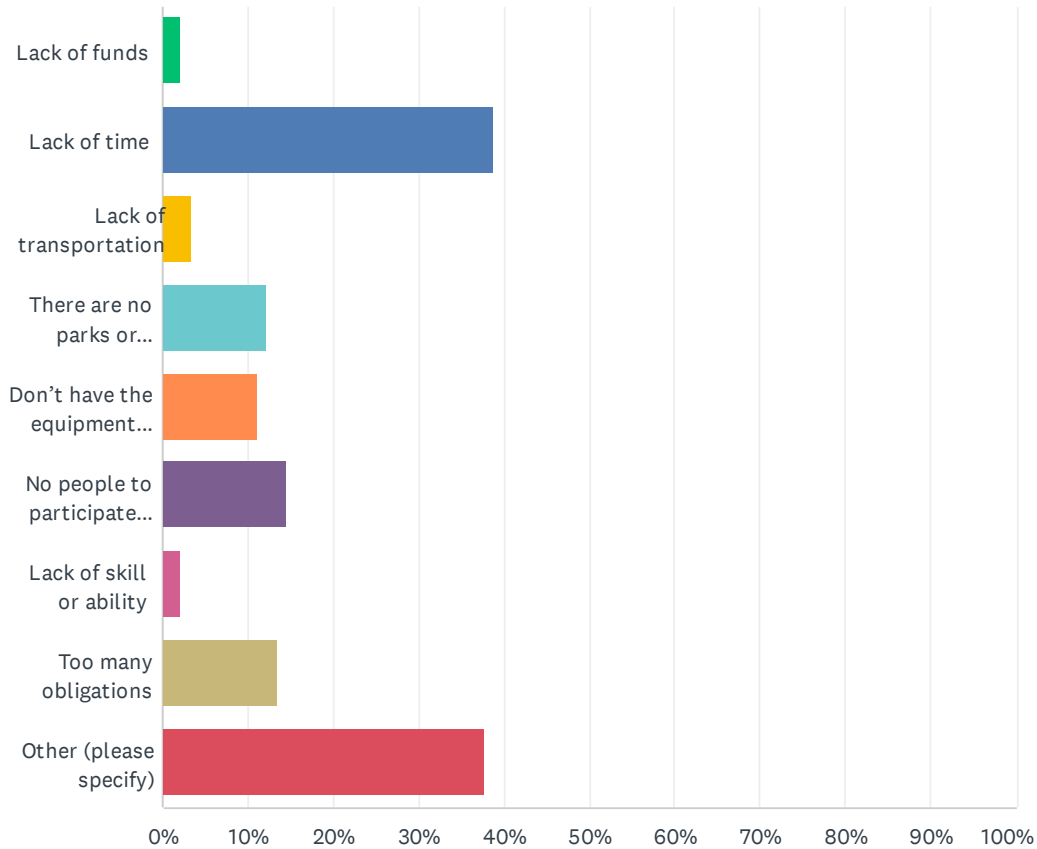
57	i think lake Missaukee access could be expanded. both at the current county park and boat launch, and especially at the current city park and newly acquired downtown property. i believe the single biggest boast to the local businesses would be an extensive marina complex in lake city. complete with an extensive break wall to protect the marina from the prevailing wind and waves. fuel and bait on site. not for permanent docking but rather for extensive transient docking. parking in town is an issue and there is little to no available space to expand it. use the water and encourage parking at the marina as a way to visit the local businesses. i believe there is available space at the current county park and boat launch to expand more permanent docking there.	9/29/2022 9:19 AM
58	Old bathrooms, no shower house, no activities for kids	9/29/2022 7:00 AM
59	I can't think of anything.	9/28/2022 7:34 PM
60	The lack of a comprehensive parks and recreation plan.	9/28/2022 11:44 AM
61	I wish there was more shade near the beach sand area and more Tables shoulda be closer to beach and waterfront area	9/28/2022 10:02 AM
62	I like that they will be accessible to residents in Missaukee County that pay taxes	9/28/2022 9:37 AM
63	1. The boats moored off the County Park beach are a concern for safety. It is not legal to moor a boat overnight on an inland lake. If someone is injured at some point, the County could be held liable. 2. There is no safe way to bicycle from anywhere in Lake City to access the trails at Missaukee Mountain or the Cadillac Pathway.	9/28/2022 9:03 AM
64	Need more access to seasonal sites at park	9/27/2022 7:30 PM
65	County boat ramp needs to be redone causes damage to boat trailer	9/27/2022 2:50 PM
66	Not enough of them - would like more parks, easily connecting bike trails to parts of the county.	9/27/2022 12:02 PM
67	Wish there was a Crooked Lake seasonal site reservation program in place, rather than multiple campers parked in the road waiting to get a site. Also, more electric sites would be nice.	9/27/2022 11:15 AM
68	I don't like the "no dogs" signs for the winter months, however I understand not all folks pick up their dog's excrement.	9/27/2022 10:20 AM
69	Shallow boat launch access sites	9/26/2022 11:07 PM
70	Not enough kids activities	9/26/2022 9:15 PM
71	It seems difficult to make a reservation for any camping spots. Would enjoy more hiking and walking trails	9/26/2022 9:12 PM
72	They're run down. They feel old and unused.	9/26/2022 8:11 PM
73	N/A	9/26/2022 6:20 PM
74	hard for locals to get a boat slip or camp.	9/26/2022 4:58 PM
75	Playground needs to be kept up, volleyball net has been down all summer.	9/26/2022 4:40 PM
76	Could use some updates	9/26/2022 4:25 PM
77	needs updating	9/26/2022 3:22 PM
78	not maintained properly	9/26/2022 3:04 PM
79	Not enough is offered.	9/26/2022 1:57 PM
80	24 hour advanced reservations for county "residents" not county property owners	9/26/2022 12:03 PM

5 Year Parks & Recreation Master Plan Survey

81	Beaches need to be raked more often	9/26/2022 11:43 AM
82	see above	9/26/2022 10:52 AM
83	Not enough non-motorized trail linkages from one to the next	9/26/2022 10:26 AM

### Q5 Please identify barriers that make it difficult for you to visit your local parks and community recreation programs.

Answered: 90 Skipped: 30



ANSWER CHOICES	RESPONSES
Lack of funds	2.22% 2
Lack of time	38.89% 35
Lack of transportation	3.33% 3
There are no parks or programs that interest me	12.22% 11
Don't have the equipment needed	11.11% 10
No people to participate with	14.44% 13
Lack of skill or ability	2.22% 2
Too many obligations	13.33% 12
Other (please specify)	37.78% 34
Total Respondents: 90	

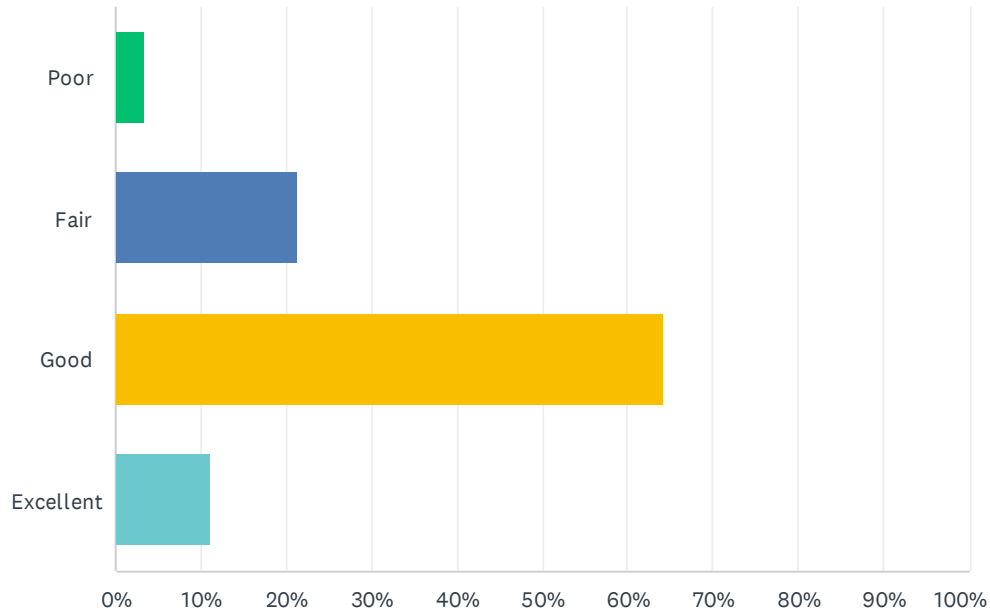
#	OTHER (PLEASE SPECIFY)	DATE
---	------------------------	------

## 5 Year Parks & Recreation Master Plan Survey

1	If there are recreation programs, there is little or no marketing of the programs.	10/24/2022 3:31 PM
2	Lack of non-motorized, safe walking trails	10/16/2022 9:01 PM
3	They don't really exists	10/16/2022 8:34 PM
4	Available spaces	10/15/2022 5:14 PM
5	Not missaukee resident. Will not spend another dime there if I ever visit there again. Parks are only for county residents.p	10/14/2022 10:06 PM
6	No campground sites open.	10/14/2022 7:28 PM
7	Somehow various athletic leagues need to be organized to get local kids involved more.	10/14/2022 3:39 PM
8	the docks that are available are always busy, so no room for us to fish	10/14/2022 2:24 PM
9	We would like to camp but we can't get in. We would like to dock our boat but can't.	10/14/2022 9:13 AM
10	Live in another state	10/14/2022 8:30 AM
11	Not receiving enough information about the program offerings.	10/14/2022 8:23 AM
12	No space in parks	10/14/2022 7:33 AM
13	Not enough organized programs	10/14/2022 2:35 AM
14	I am just learning about all of the parks in the area. I pretty much only know what is on the main road through town.	10/13/2022 9:54 PM
15	I don't live locally but I do visit Lake City 2-3 times per year and when I am there I am spending a lot of time outside and would love to see areas improved!	10/6/2022 10:40 AM
16	working and nothing for grandchildren to do	10/5/2022 6:20 PM
17	need more senior programs	10/3/2022 12:14 PM
18	There is only 1 pb court	10/1/2022 9:16 AM
19	would like to see golf cart use in town for easier acces for elderly	9/30/2022 5:02 PM
20	Not really any barriers for me	9/30/2022 3:34 PM
21	Would like to see more hiking routes and bicycle routes around the area.	9/30/2022 11:58 AM
22	I do not feel I have any barriers.	9/30/2022 11:08 AM
23	Need better boat launching areas	9/30/2022 11:00 AM
24	I would like to ride bike into town but limited by the unsafe roads	9/30/2022 10:45 AM
25	No barriers and yearly park pass is a wonderful thing.	9/30/2022 10:41 AM
26	I don't think rustic campsites should be rented for the entire season by one person.	9/30/2022 9:42 AM
27	Hours of operation.	9/29/2022 8:58 PM
28	We have lived in Falmouth for 4 years and I couldn't tell you where crooked lake park is or if it's available for day use. The marketing for our county parks has been terrible! Also miltner beach park is disgusting due to dog poop and ants. Literally can't lay or sit in that sand. So sad. Imagine what out of towns folks think when stopping on their way through.	9/29/2022 9:37 AM
29	parking	9/29/2022 9:19 AM
30	None of these apply to me. There are no barriers that affect me.	9/28/2022 7:34 PM
31	No barriers come to mind	9/28/2022 11:44 AM
32	Lack of local parks and recreation programs.	9/27/2022 12:02 PM
33	Sites aren't available	9/27/2022 11:15 AM
34	I would love to spend more time at the campgrounds if I could get a spot for a week or weekend.	9/26/2022 4:58 PM

### Q6 Please rate the overall cleanliness and appearance of your local parks and trails system compared to other communities.

Answered: 117 Skipped: 3

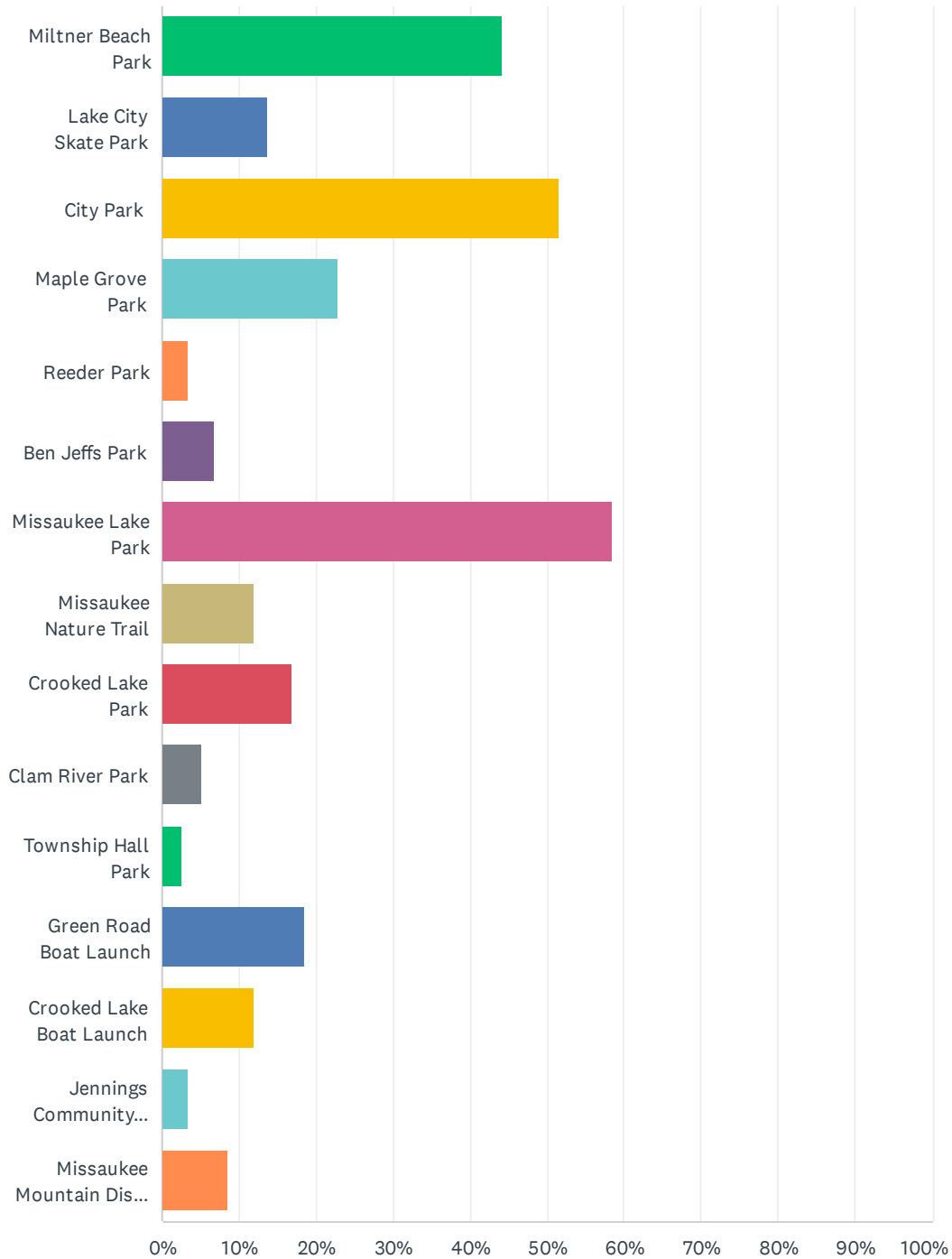


ANSWER CHOICES	RESPONSES	
Poo	3.42%	4
Fa	21.37%	25
Good	64.10%	75
Excel ent	11.11%	13
TOTAL		117



### Q7 Which local parks do you visit the most? Please select your top three.

Answered: 118 Skipped: 2

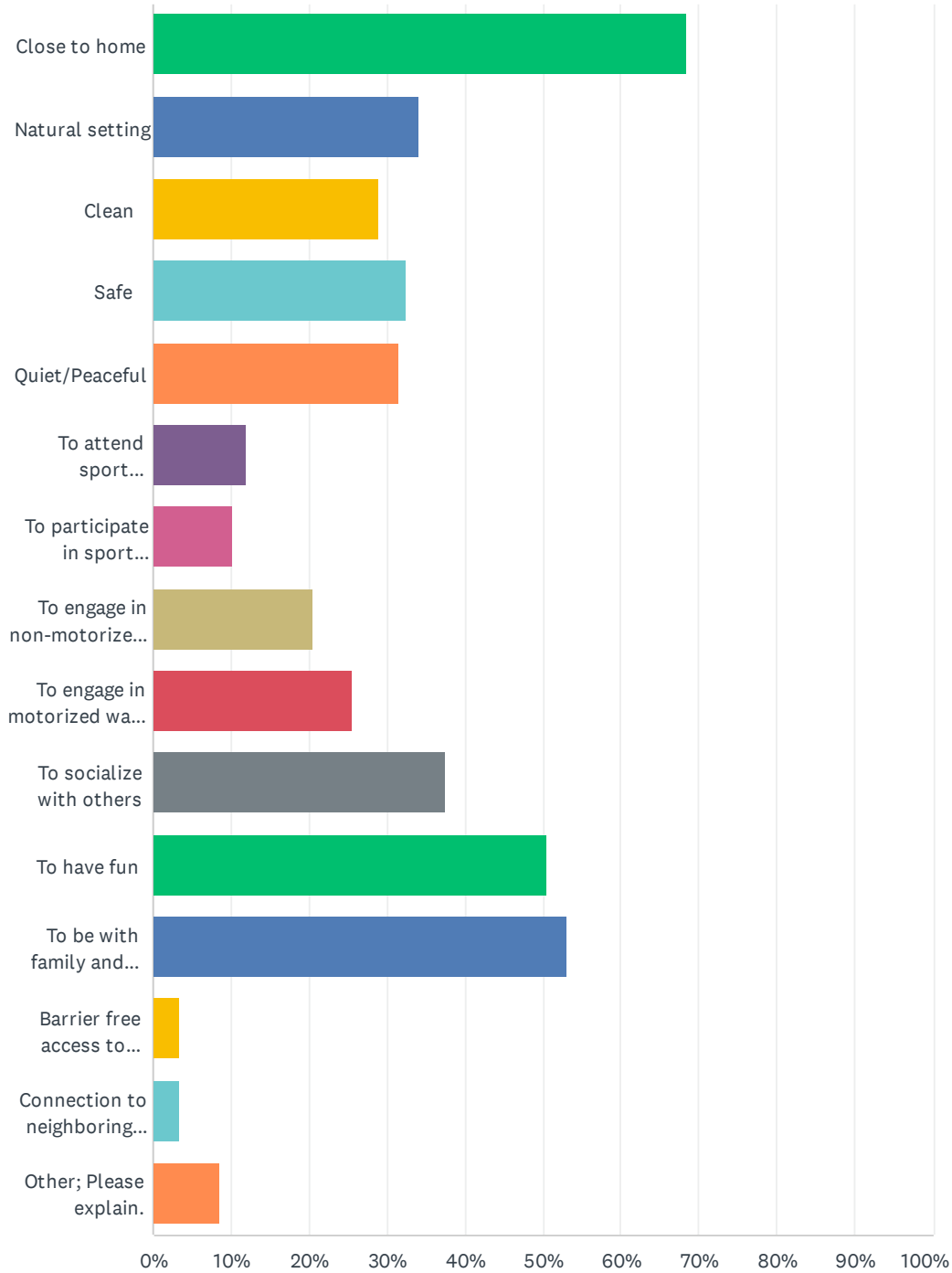


## 5 Year Parks & Recreation Master Plan Survey

ANSWER CHOICES	RESPONSES	
Miltner Beach Park	44.07%	52
Lake City Skate Park	13.56%	16
City Park	51.69%	61
Maple Grove Park	22.88%	27
Reeder Park	3.39%	4
Ben Jeffs Park	6.78%	8
Missaukee Lake Park	58.47%	69
Missaukee Nature Trail	11.86%	14
Crooked Lake Park	16.95%	20
Clam River Park	5.08%	6
Township Hall Park	2.54%	3
Green Road Boat Launch	18.64%	22
Crooked Lake Boat Launch	11.86%	14
Jennings Community Playground	3.39%	4
Missaukee Mountain Disc Golf Course	8.47%	10
<b>Total Respondents: 118</b>		

# Q8 When you are able, why do you choose to visit or engage in Missaukee County recreation opportunities?

Answered: 117 Skipped: 3



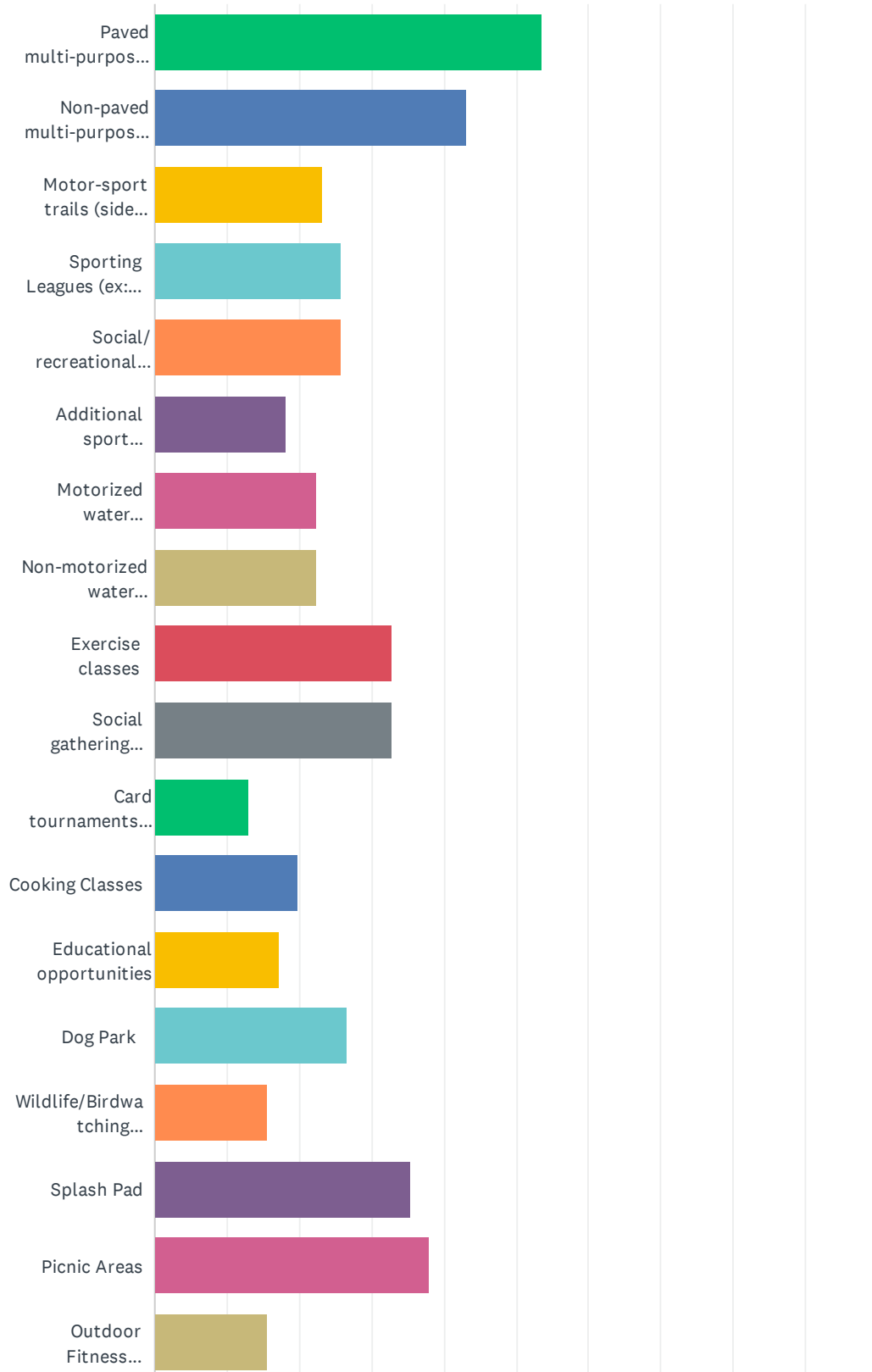
## 5 Year Parks & Recreation Master Plan Survey

ANSWER CHOICES	RESPONSES	
Close to home	68.38%	80
Natural setting	34.19%	40
Clean	29.06%	34
Safe	32.48%	38
Quiet/Peaceful	31.62%	37
To attend sporting activities	11.97%	14
To participate in sporting activities	10.26%	12
To engage in non-motorized water activities	20.51%	24
To engage in motorized water activities	25.64%	30
To socialize with others	37.61%	44
To have fun	50.43%	59
To be with family and friends	52.99%	62
Barbecue access to recreational opportunities	3.42%	4
Connect on to neighboring communities	3.42%	4
Other; Please explain.	8.55%	10
Total Respondents: 117		

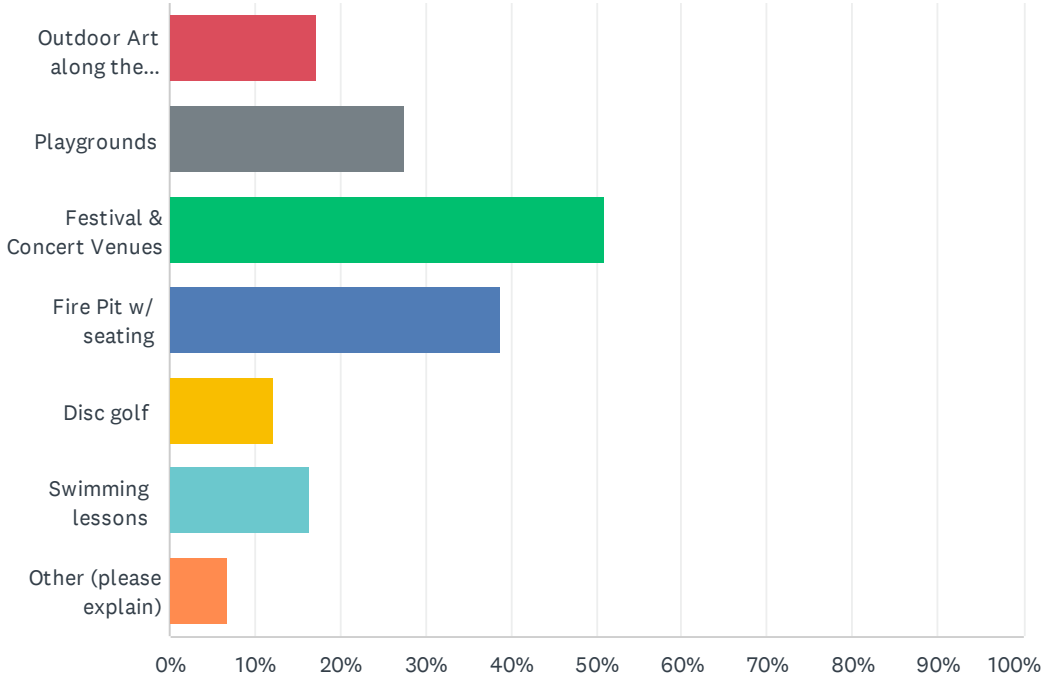
#	OTHER; PLEASE EXPLAIN.	DATE
1	To offer programs for area children.	10/24/2022 3:31 PM
2	Walking dogs, need a dog park	10/16/2022 8:34 PM
3	Campgrounds	10/14/2022 7:28 PM
4	It doesn't cost much to enjoy. It's affordable	10/14/2022 2:24 PM
5	We own a cottage here	10/13/2022 5:54 PM
6	get away from everyday life stress	10/3/2022 12:00 PM
7	The pickleball courts in LC are wonderful and if you look at the courts; they are used often.	9/30/2022 10:41 AM
8	Fishing	9/26/2022 11:07 PM
9	To attend Greatest 4th In The North	9/26/2022 6:20 PM
10	to walk	9/26/2022 4:40 PM

### Q9 If provided as an option, which of the following opportunities would you choose to participate in or use? (Choose all that apply)

Answered: 116 Skipped: 4



5 Year Parks & Recreation Master Plan Survey



## 5 Year Parks & Recreation Master Plan Survey

ANSWER CHOICES	RESPONSES	
Paved mu t -pu pose t a s fo non-motor zed act v t es (h k ng, b k ng, c oss-count y sk ng, etc.)	53.45%	62
Non-paved mu t -pu pose t a s fo non-motor zed act v t es (h k ng, b k ng, c oss-count y sk ng, etc.)	43.10%	50
Moto -sport t a s (s de by s de, fou whee ng, snowmob ng, etc.)	23.28%	27
Spo t ng Leagues (ex: vo eyba , basketba , p ck eba , etc.)	25.86%	30
Soc al/ ec eat ona c ubs (ex: wa k ng c ub, cards c ub, b d watch ng c ub, etc.)	25.86%	30
Add t ona spo t fac t es (ex. More socce f e ds, basebal f e ds, tenn s cou ts, etc.)	18.10%	21
Moto ized wate act v t es	22.41%	26
Non-moto zed water act v t es	22.41%	26
Exe c se c asses	32.76%	38
Soc al gathe ng oppo tun t es	32.76%	38
Ca d tou naments (ex. Euch e, poke , br dge, etc.)	12.93%	15
Cook ng C asses	19.83%	23
Educat ona oppo tun t es	17.24%	20
Dog Pa k	26.72%	31
W d fe/B dwatch ng P atfo ms	15.52%	18
Spash Pad	35.34%	41
P cn c A eas	37.93%	44
Outdoor F tness Equ pment	15.52%	18
Outdoor A t a ong the T a s	17.24%	20
P ayg ounds	27.59%	32
Fest va & Conce t Venues	50.86%	59
F e P t w/ seat ng	38.79%	45
D sc go f	12.07%	14
Swimm ng ersions	16.38%	19
Othe (p ease exp a n)	6.90%	8
Total Respondents: 116		

#	OTHER (PLEASE EXPLAIN)	DATE
1	Mu t -generat ona p anned opportun t es and poss bly pa tne with schools for: new fam es/bab es/todders, young ch d en, youth, teens, young fam es, s ng es, empty neste s, and the elde y.	10/24/2022 3:31 PM
2	Campg ounds	10/14/2022 7:28 PM
3	Mo e p ck e bal cou ts	10/14/2022 2:35 AM
4	Equ ne t a s	10/13/2022 9:29 PM
5	Ice skat ng on the ake	10/5/2022 11:13 AM

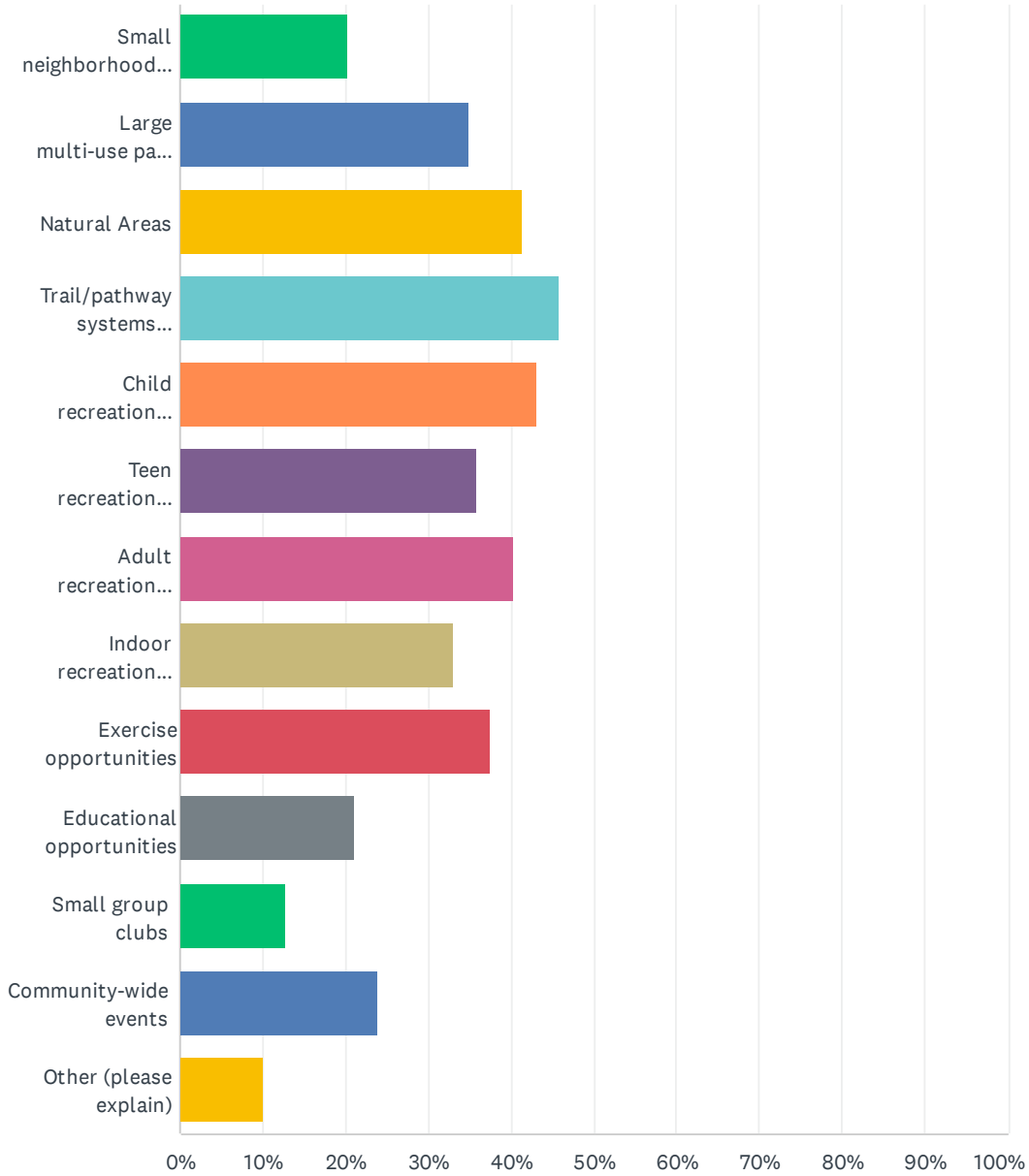
## 5 Year Parks & Recreation Master Plan Survey

6	More cultural programming.	10/3/2022 3:47 PM
7	Outdoor winter ice skating area. Area next to insurance business would be safe (water level) using the edge of Lake Missaukee.	9/30/2022 10:41 AM
8	Tax dollars should not be spent to entertain people. It should be organized and executed with volunteers.	9/26/2022 6:20 PM



# Q10 What type(s) of recreational opportunities do you feel are most needed?

Answered: 109 Skipped: 11



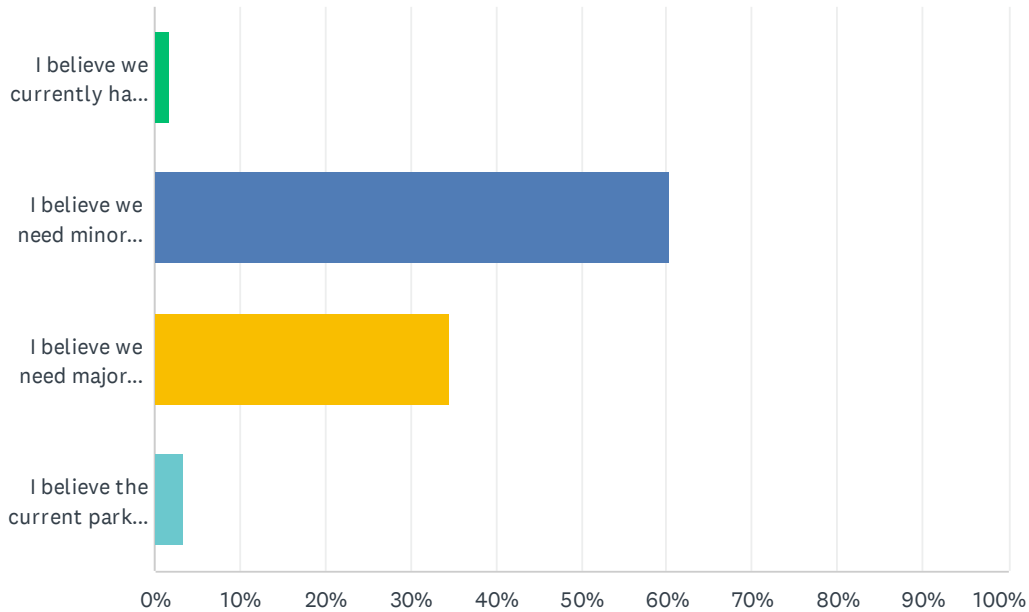
## 5 Year Parks & Recreation Master Plan Survey

ANSWER CHOICES	RESPONSES	
Small neighborhood parks	20.18%	22
Large multi-use parks that serve the whole community	34.86%	38
Natural Areas	41.28%	45
Trail/pathway systems connecting to neighborhoods & communities	45.87%	50
Child recreation opportunities	43.12%	47
Teen recreation opportunities	35.78%	39
Adult recreation opportunities	40.37%	44
Indoor recreation opportunities	33.03%	36
Exercise opportunities	37.61%	41
Educational opportunities	21.10%	23
Small group clubs	12.84%	14
Community-wide events	23.85%	26
Other (please explain)	10.09%	11
Total Respondents: 109		

#	OTHER (PLEASE EXPLAIN)	DATE
1	Booklet to sign up each season offering fee or pay opportunities.	10/24/2022 3:31 PM
2	Family recreation areas	10/14/2022 2:34 PM
3	Waterfront and town together with safe dock space and food/entertainment options with walking distance	10/14/2022 8:30 AM
4	Camping facilities with electric water and septic	10/14/2022 7:33 AM
5	Booking groups	10/10/2022 9:07 PM
6	Yoga in the park	10/5/2022 11:13 AM
7	Baseball fields for travel teams to host games with concessions and restrooms	10/4/2022 9:27 AM
8	Benches in and out of LC downtown.	9/30/2022 10:41 AM
9	Huge need in area for teens to do something	9/30/2022 9:01 AM
10	Mssaukee county's desperate need of indoor recreational opportunities for all ages and open 7 days a week with exception of holidays. We have the longest winters and the cost of outdoor sports is so many to expensive. We have a society bonded and depressed and overweight. We have winters where the weather is a most never favorable for outdoor sports. The residents don't visit on weekends we've here day in and day out. Yet we offer little to nothing for exercise or community indoor recreation. The lake city recreation center is a joke. The hours of operation is a joke. Mom's, kids, teens are desperate for an outlet. Our family take a year drives to Mt Pleasant during the winter as they offer so many different things for all ages. We have to and can do better for our county.	9/29/2022 9:37 AM
11	Should be funded by the private sector.	9/26/2022 6:20 PM

## Q11 Choose which statement best applies to you.

Answered: 116 Skipped: 4



ANSWER CHOICES	RESPONSES
I believe we currently have an outstanding parks and recreation system, and we don't need to make any changes.	1.72% 2
I believe we need minor improvements to make our parks and recreation system more useful.	60.34% 70
I believe we need major improvements to make our parks and recreation system more useful.	34.48% 40
I believe the current parks and recreation system is not successful or useful.	3.45% 4
<b>TOTAL</b>	<b>116</b>

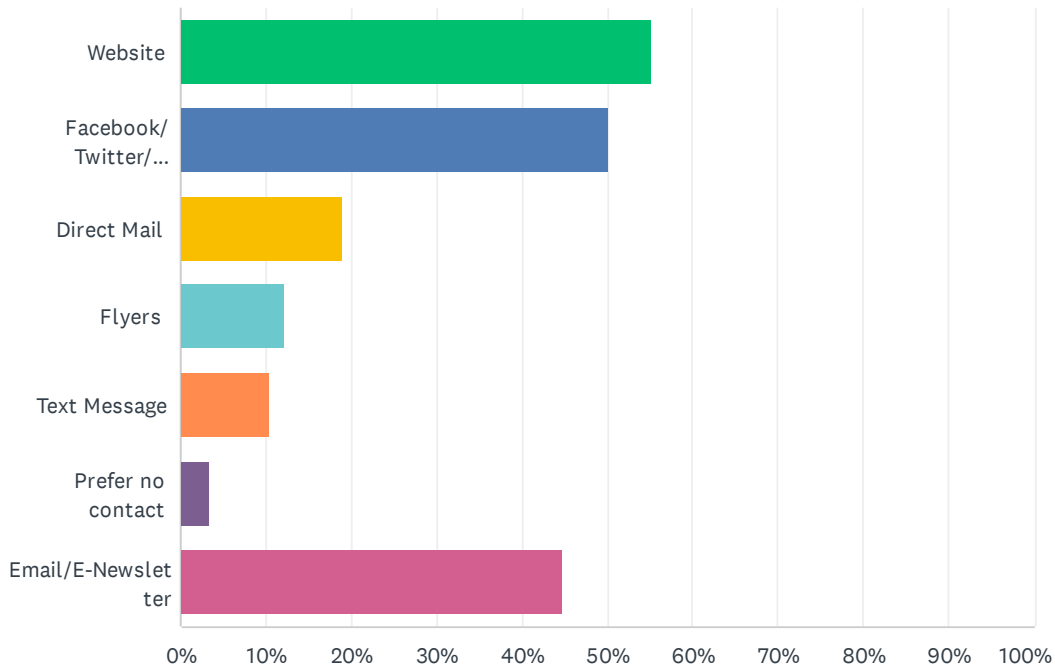
#	COMMENT	DATE
1	Our county Parks and Recreation system is in name only. There are no programs. In the community the real programs that could easily be folded into an official Parks and Recreation system/program - it would be dynamic! and... have a full-time or part-time person to coordinate whatever a percentage of salary is paid by the community and a percentage is paid by fees.	10/24/2022 3:31 PM
2	Many people in Winnebago county have dogs, but the lack of safe walking trails or dog park to safely play with and exercise dogs	10/16/2022 9:01 PM
3	I am not aware of the full scope of the park system, as a vacation home owner only. Full-time residents would know best.	10/14/2022 2:34 PM
4	I suggest putting info on each park on the county's website. I've never even heard of some of the parks listed in this survey and I've lived in Winnebago county my whole life. One is Reede Park. What is that? Where is it? I live in Reede township but have never heard of it. I just tried to find info on it but the county website only currently has info on 3 of the parks listed in this survey.	10/14/2022 9:07 AM
5	Improve the town and lake connectivity. Remove parking at end of front street. Make that a real park. Encourage business to come in and support the lake, clubs and entertainment	10/14/2022 8:30 AM

## 5 Year Parks & Recreation Master Plan Survey

6	Need to focus on more parks the missaukee County park ..crooked lake needs attention too . Shouldn't take money from this park to improve town. Nothings been done at crooked for yrs	10/9/2022 7:30 PM
7	We have great parks, but we need a trail/bike system and programming for youth and children.	10/4/2022 3:22 PM
8	we need more maps, information of what is happening, expand to neighboring areas information of each others activiesg areasto share actictives er	10/3/2022 12:14 PM
9	Resurface tennis courts and have dedicated pickleball courts	9/30/2022 6:28 PM
10	We need to coordinate	9/30/2022 3:34 PM
11	Safe Bike paths, downtown development park for all	9/30/2022 11:58 AM
12	We need safe pathways for people to get into town.	9/30/2022 10:45 AM
13	not necessarily improvements, just expansion and additions to what we currently have.	9/29/2022 9:19 AM
14	Would love to see art!	9/28/2022 9:42 PM
15	I'm not sure if more Crooked Lake electric site options are a major or minor improvement.	9/27/2022 11:15 AM
16	I think we have a good base for our parks but have lots of opportunity to grow and imprrove	9/26/2022 9:12 PM

### Q12 What is the best way for your local parks and recreation department to share information with you? (Of note, the email addresses will not be shared and would only be used to send updates.)

Answered: 116 Skipped: 4



ANSWER CHOICES	RESPONSES	
Website	55.17%	64
Facebook/ Twitter/ Instagram	50.00%	58
Direct Mail	18.97%	22
Flyers	12.07%	14
Text Message	10.34%	12
Prefer no contact	3.45%	4
Email/E-Newsletter	44.83%	52
Total Respondents: 116		

#	ENTER YOUR EMAIL ADDRESS:	DATE
█	████████████████████	██████████
█	████████████████████	██████████
█	████████████████████	██████████
█	████████████████████	██████████
█	████████████████████	██████████

## Q13 Please share additional thoughts and ideas regarding Parks and Recreation programs and facilities below.

Answered: 30 Skipped: 90

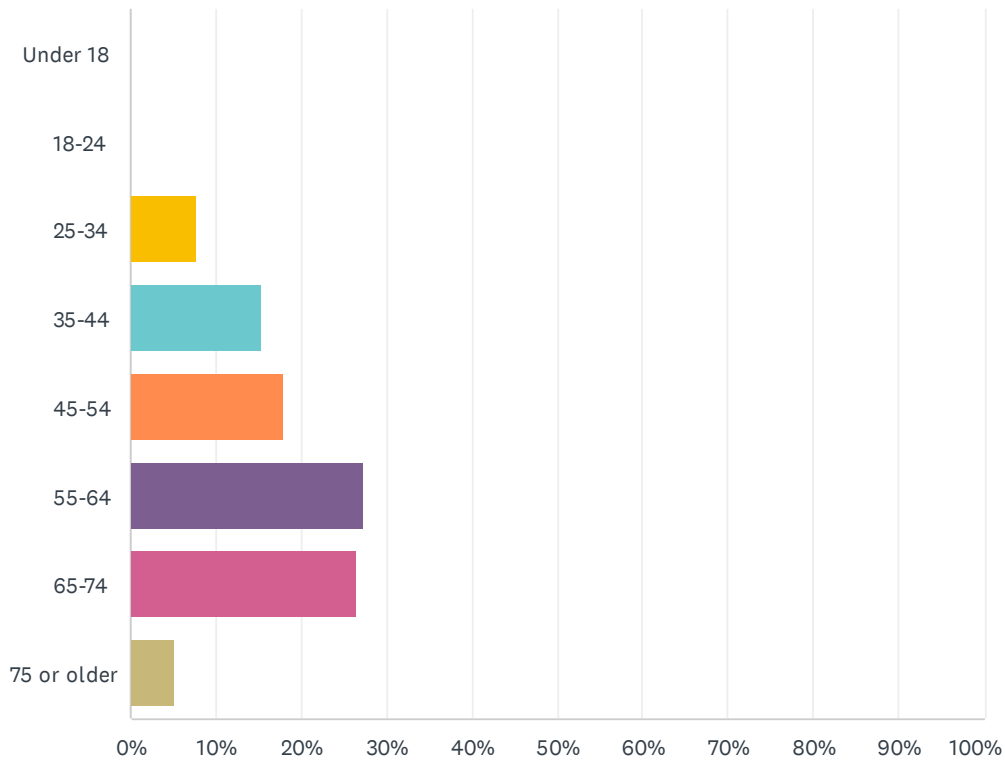
#	RESPONSES	DATE
1	This is a great beginning. Start slow - hire a coordinator (full or part time) with clear goals and objectives to plan, organize, execute, and evaluate the year-long Parks and Recreation program and facilities.	10/24/2022 3:31 PM
2	Updated downtown bathroom facilities, redirect large commercial trucking away from our downtown area so it can be more safe for families to enjoy our Milner Beach area.	10/20/2022 12:53 PM
3	Many people in missaukee county have dogs, but there is a lack of safe walking trails or dog park to safely play with and exercise dogs	10/16/2022 9:01 PM
4	A dog park/walk area would be nice too but a system of paved or non paved trails for safely walking in a natural setting is most needed, trails not shared by any kind of motorized vehicles.	10/16/2022 10:53 AM
5	Concerns are mostly in regards to the development of the new park in Jennings on Crooked Lake	10/14/2022 3:48 PM
6	We have a beautiful water front that should be showcased allowing local folks and visitors to enjoy the fantastic views in Lake City.	10/14/2022 3:39 PM
7	Is there a website now where we can find all the local and regional recreation offerings??	10/14/2022 2:34 PM
8	A fountain in the park in the center of town and lighting up the trees for evening beauty.	10/14/2022 2:13 PM
9	We need to upgrade these towns to bring some life to them.	10/14/2022 9:13 AM
10	There is a lot of opportunity for people to enjoy the outdoors. However the activities that make our area unique (fishing, hiking, camping, hunting, etc) can require a lot of travel to find an easily accessible point that isn't overly busy.	10/14/2022 7:26 AM
11	Too much to discuss here	10/14/2022 4:16 AM
12	More festivals in the heart of LC	10/14/2022 2:35 AM
13	Would be nice to have picnic tables. Benches and trash can at the beach area at crooked lake and make beach area a tad bigger	10/9/2022 7:30 PM
14	You've got to make it fair, make our area available to those that want to come. New people in town is good for natural growth. Make reserving a camp site and or a boat slip easy and online. And not having to sit at a computer at exactly 8:00 on a random day to reserve your spot. It should be a block of time and it becomes a lottery if all spots or times are full. if you use a block of time you can determine how many want a site, and then you can backfill with anyone who does not confirm their site reservation with those that did not win on the lottery with another lottery. Becomes fair.	10/4/2022 9:21 AM
15	Boating access in the city and county is extremely important. Stocking programs for fishing and programs designed to teach and enhance the youths ability to enjoy the opportunities local lakes have to offer.	10/4/2022 7:20 AM
16	include in the web site things that are happening at the senior center and at COA	10/3/2022 12:14 PM
17	Outdoor summer activities and facilities are of primary interest. Indoor facilities for winter activities would be great, but are a secondary priority.	9/30/2022 6:28 PM
18	Resurface tennis courts	9/30/2022 6:22 PM
19	Need additional Pickelball courts	9/30/2022 5:13 PM
20	Competitive assessment to other aspirational communities would be a good foundation.	9/30/2022 11:58 AM

## 5 Year Parks & Recreation Master Plan Survey

21	Water way to Lake Missaukee needs to be dredged	9/30/2022 11:00 AM
22	Cross Country ski trails need work and better signage	9/30/2022 10:41 AM
23	There should be more rustic campsites at Crooked Lake campground and as first come first serve	9/30/2022 9:42 AM
24	It's a Recreation Plan, not a Parks and Recreation Plan.	9/29/2022 10:18 AM
25	Use funds wisely. Stop taking direction from generational residents who don't want change or who have sat on boards for far to long. Don't believe your idea is the best idea. Before decisions make known to residents of potential plan in detail as well as the time and place the public can come in and speak their opinions and ideas. Though this survey will help a little it's not going to reach all county residents. Which would be necessary in hearing valid ideas, concerns and the like to best implement a county plan to suit the needs of all and not just your own.	9/29/2022 9:37 AM
26	any connections to the community in the way of the local school sports teams, charitable organizations, businesses, ect is a great way to connect people together. include, promote and involve as many as possible. GO TROJANS!	9/29/2022 9:19 AM
27	I was not aware of a walking trail in this area.	9/28/2022 9:37 AM
28	Thank you so much for the opportunity to take this survey	9/27/2022 11:15 AM
29	Lake city needs a splash pad for kids and playground and fire place in downtown wouldn't put basketball by park tho because that brings in older kids to	9/26/2022 11:47 AM
30	I hope the decision for a splash pad is denied. Splash pads are very expensive to maintain and would be a cost to taxpayers	9/26/2022 11:43 AM

## Q14 What is your age?

Answered: 117 Skipped: 3

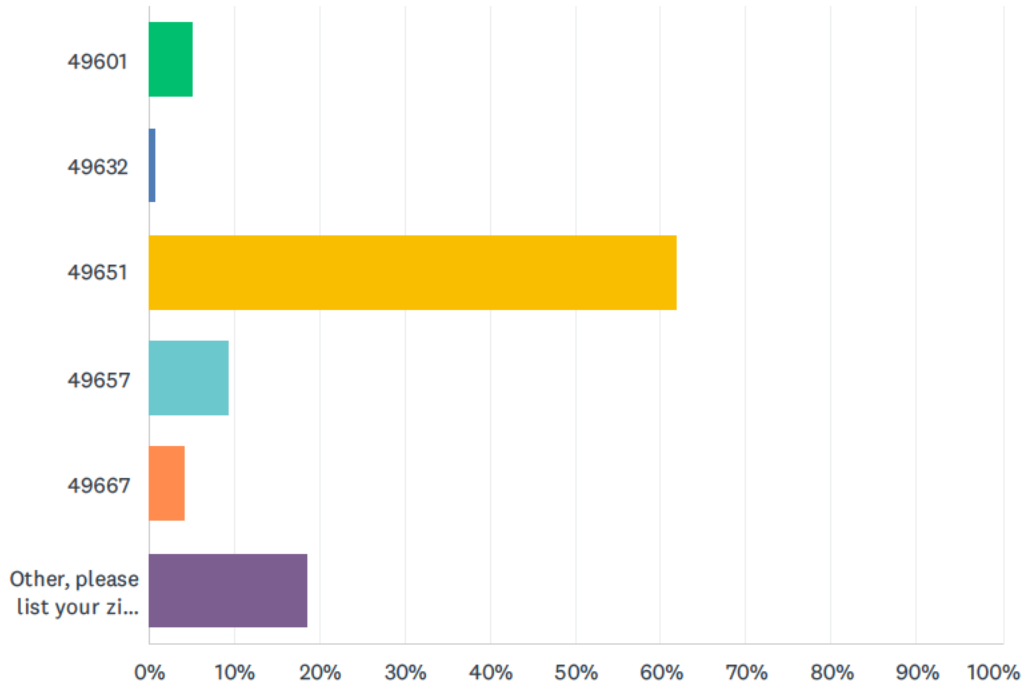


ANSWER CHOICES	RESPONSES	
Under 18	0.00%	0
18-24	0.00%	0
25-34	7.69%	9
35-44	15.38%	18
45-54	17.95%	21
55-64	27.35%	32
65-74	26.50%	31
75 or older	5.13%	6
<b>TOTAL</b>		<b>117</b>



## Q15 What is your current zip code?

Answered: 118 Skipped: 2



ANSWER CHOICES	RESPONSES	
49601	5.08%	6
49632	0.85%	1
49651	61.86%	73
49657	9.32%	11
49667	4.24%	5
Other, please list your zip code:	18.64%	22
<b>TOTAL</b>		<b>118</b>

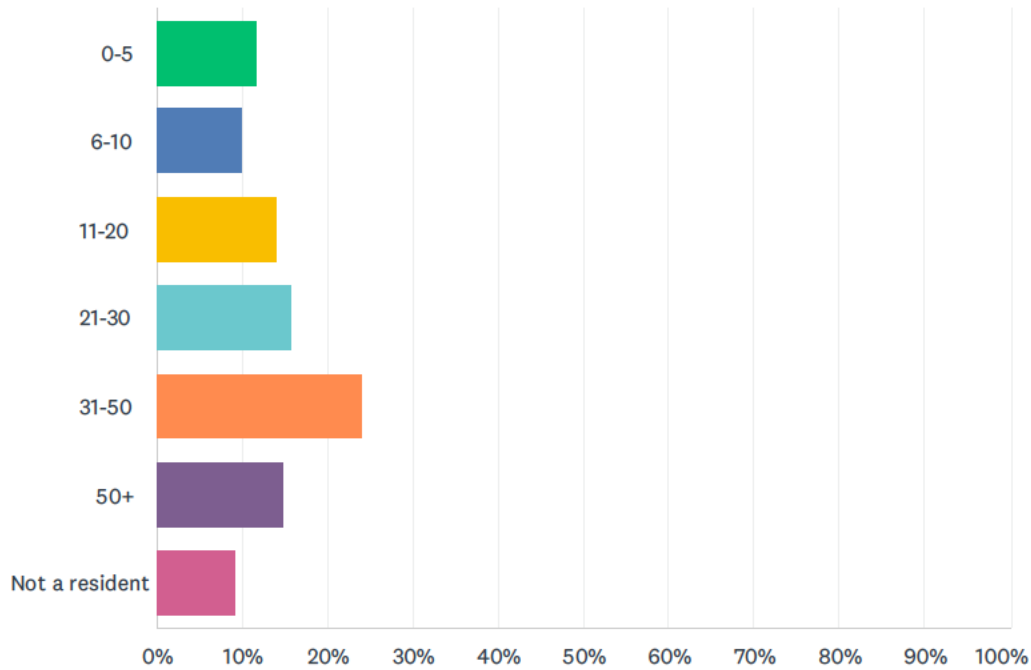
#	OTHER, PLEASE LIST YOUR ZIP CODE:	DATE
1	49663-I am in M ssaukee County	10/16/2022 11:16 AM
2	49663	10/14/2022 7:28 PM
3	49345	10/14/2022 2:34 PM
4	80212	10/14/2022 8:30 AM
5	49663	10/14/2022 8:23 AM
6	49315	10/14/2022 6:28 AM
7	48651	10/14/2022 4:16 AM
8	49677	10/13/2022 5:54 PM

## 5 Year Parks & Recreation Master Plan Survey

9	80212	10/6/2022 10:40 AM
10	49651	10/5/2022 6:20 PM
11	49651	10/4/2022 9:21 AM
12	49663	10/3/2022 12:00 PM
13	49663	9/30/2022 5:13 PM
14	48848	9/30/2022 5:02 PM
15	49651	9/30/2022 10:27 AM
16	49663	9/30/2022 10:22 AM
17	49651	9/29/2022 10:18 AM
18	49651-0371	9/27/2022 10:20 AM
19	49663	9/26/2022 11:07 PM
20	48611	9/26/2022 9:15 PM
21	49663	9/26/2022 4:25 PM
22	48169	9/26/2022 12:03 PM

## Q16 How many years have you been a resident of greater Missaukee County?

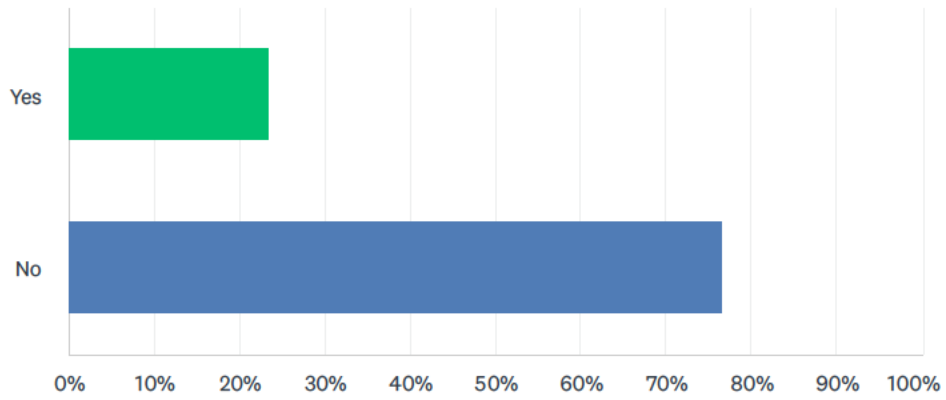
Answered: 120 Skipped: 0



ANSWER CHOICES	RESPONSES
0-5	11.67% 14
6-10	10.00% 12
11-20	14.17% 17
21-30	15.83% 19
31-50	24.17% 29
50+	15.00% 18
Not a resident	9.17% 11
<b>TOTAL</b>	<b>120</b>

### Q17 Do you have children under the age of 18 in your household?

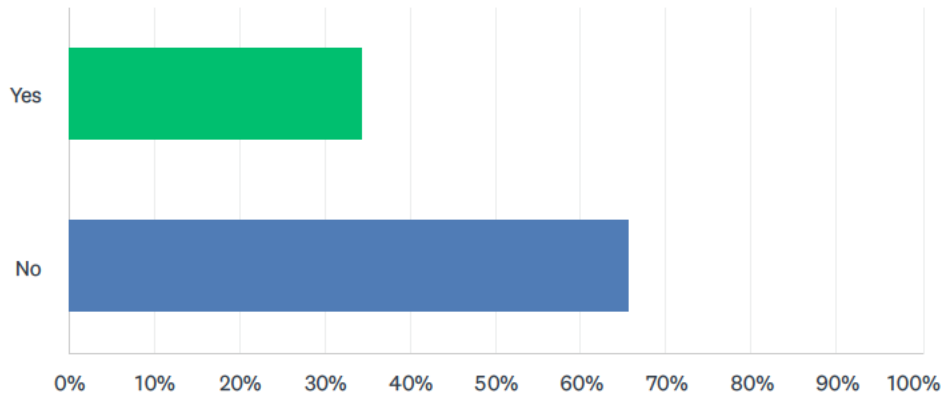
Answered: 119 Skipped: 1



ANSWER CHOICES	RESPONSES	
Yes	23.53%	28
No	76.47%	91
TOTAL		119

### Q18 Are you aware of any local resident or group of residents that would benefit from additional recreational opportunities based on their age, disability, or other specific need?

Answered: 108 Skipped: 12



ANSWER CHOICES	RESPONSES
Yes	34.26% 37
No	65.74% 71
TOTAL	108

#	COMMENT	DATE
1	We need outdoor groups/cubs for young adults 18-25.	10/16/2022 11:16 AM
2	At our previous home our kids enjoyed the ability to play soccer, baseball and organized league and I think we could do a better job with that here.	10/14/2022 3:39 PM
3	I would love to bring my grandchilden to hang out or do activities close to home, instead of having to travel an hour or more away from home.	10/14/2022 9:13 AM
4	Seniors	10/14/2022 7:33 AM
5	1-25	10/14/2022 2:35 AM
6	Wheelchair pathway to the lake through the sand	10/5/2022 11:13 AM
7	I work with families in Menominee County and we need recreational programs for children and youth to help with exercise, social skills and healthy connections.	10/4/2022 3:22 PM
8	The kayak launch is on the part of the pier on the windiest part of Lake Menominee.	9/30/2022 10:41 AM
9	Teens	9/30/2022 9:01 AM
10	seniors and teens	9/29/2022 9:19 AM
11	No, but I think this is a great question	9/27/2022 11:15 AM
12	Elderly & disabled	9/26/2022 4:25 PM
13	special needs/disability	9/26/2022 3:22 PM
14	teens	9/26/2022 3:04 PM

**Q19 Lake Township recently purchased four acres of land on Crooked Lake in Jennings, the parcel of land is between Walnut St. and Elm St., and they are seeking input as they evaluate options. Please provide feedback on the types of things you would like to see in the development of the park. What suggestions or feedback do you have as they look to build the park?**

Answered: 55 Skipped: 65

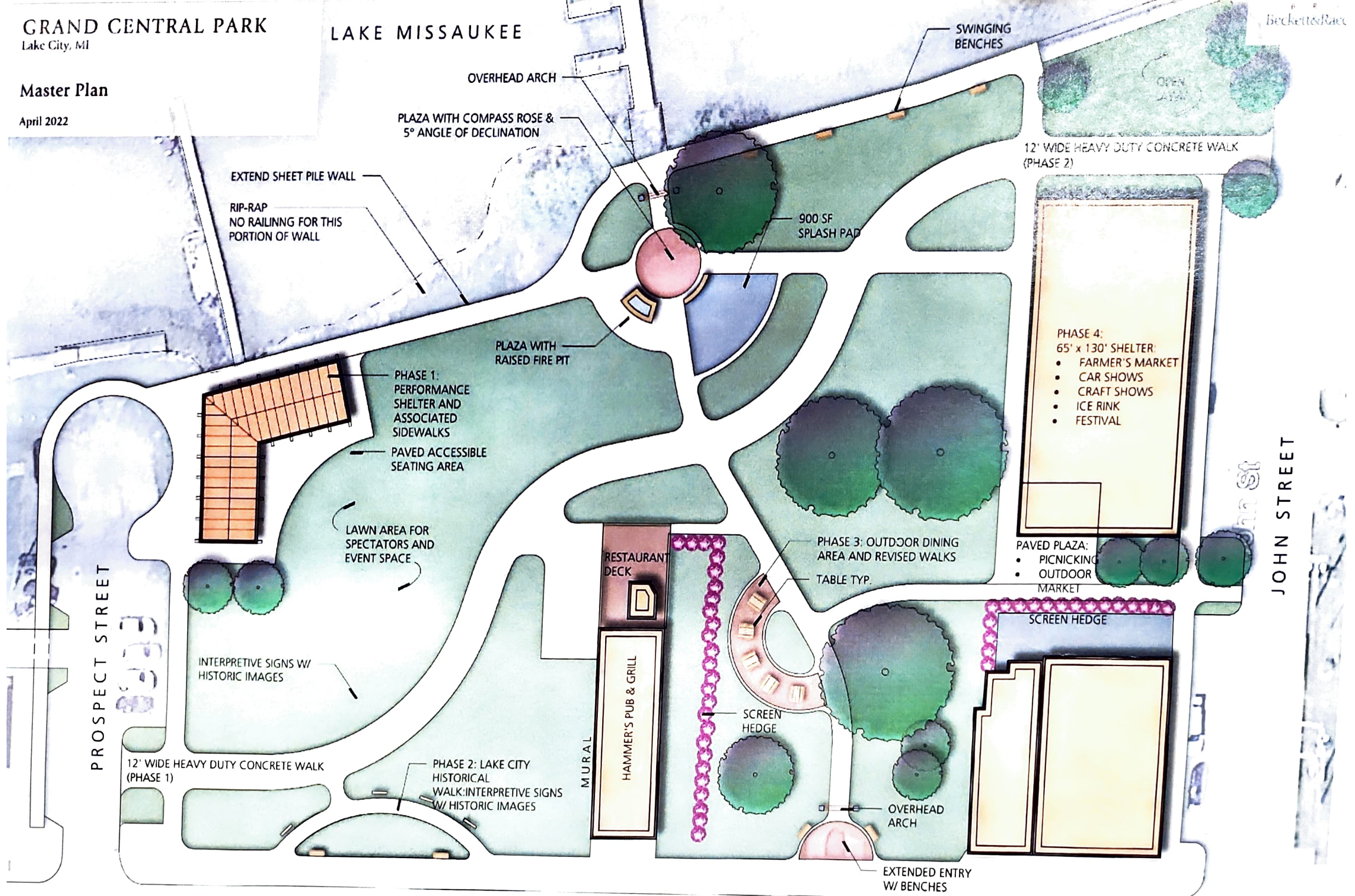
#	RESPONSES	DATE
1	A recreation center for all ages with planned programming as needed.	10/24/2022 3:31 PM
2	Lake city	10/17/2022 11:40 AM
3	Safe, non-motorized walking trails and a dog park	10/16/2022 9:01 PM
4	Dog walking park	10/16/2022 8:34 PM
5	Picnic area, pavilion, playground with bathroom facilities and basketball or tennis courts.	10/16/2022 11:16 AM
6	Walking trails	10/16/2022 10:53 AM
7	More campsites!!!	10/15/2022 5:14 PM
8	Noise ordinance, public bathrooms, no parking or access from Walnut st	10/14/2022 9:43 PM
9	I'm concerned about potential vehicle traffic access from Walnut St. cost of sewer installation for existing waterfront homes and the costs involved. Boat mooring is good with some control. Fire pit and picnic tables are a great idea. Sheltered structure is good idea but the potential cost to neighboring homes is concerning	10/14/2022 3:48 PM
10	Baseball and soccer fields	10/14/2022 3:39 PM
11	A fishing pier with handicap/disabled access	10/14/2022 8:23 AM
12	Uses to attract out of area people	10/14/2022 7:33 AM
13	Unsure	10/14/2022 7:17 AM
14	Ice skating rink, indoor/outdoor sports, sports complex	10/14/2022 4:16 AM
15	Water access	10/14/2022 2:35 AM
16	Dog park	10/13/2022 9:29 PM
17	Be nice to see benches or picnic tables and parking for vehicles with boat trailers	10/9/2022 7:30 PM
18	Lake City	10/5/2022 6:20 PM
19	Sandy, swimming beach.	10/5/2022 11:13 AM
20	It would be a great area for after school and summer recreational programs and education!	10/4/2022 3:22 PM
21	I would suggest putting in a public boat launch. We keep our pontoon on Missaukee but like to take it to Sapphire Lake (that's another boat launch that could be improved) to fish. We'd like to go out on Crooked as well but know of any good launches to put a pontoon in.	10/4/2022 9:27 AM
22	LAKE CITY	10/4/2022 9:21 AM
23	As the history of the Jennings area is so rich, the creation of an historical park and boat launch facility would introduce a large segment of the population to the character of the area.	10/4/2022 7:20 AM
24	A clean, safe, well-lighted space that all age groups can enjoy would be wonderful.	10/3/2022 3:47 PM

## 5 Year Parks & Recreation Master Plan Survey

25	playground equipment similar to the county park, pavilion, gathering place	10/3/2022 12:14 PM
26	Trails for walking and pickleball	10/1/2022 9:16 AM
27	Dog park	10/1/2022 7:45 AM
28	Pickleball courts, picnic area	9/30/2022 6:28 PM
29	It will be used more in lake city	9/30/2022 5:13 PM
30	Childrens play area. Swim area. pickleball courts	9/30/2022 5:02 PM
31	Picnic area, playground equipment.	9/30/2022 11:08 AM
32	Thank you for giving me a chance to make input.	9/30/2022 10:41 AM
33	It's a park that I wouldn't use so I am not going to give any feedback.	9/30/2022 10:27 AM
34	By all means put in a stupid splash pad	9/30/2022 9:42 AM
35	Alot	9/29/2022 10:30 PM
36	Boat launch, boat wash station, picnic area, educational signs regarding invasive species, history of lake and Jennings, story book trail	9/29/2022 10:18 AM
37	opportunities and access for locals	9/29/2022 9:19 AM
38	I don't know	9/28/2022 11:44 AM
39	Nice beach area	9/28/2022 10:02 AM
40	Safe walking trails	9/28/2022 9:37 AM
41	Beach, picnic and swimming access for the people of Jennings.	9/28/2022 9:03 AM
42	Disc Golf, Open areas, pavilion.	9/27/2022 1:16 PM
43	Bathroom facilities, Covered picnic benches, public beach if possible, limited parking, bicycle racks	9/27/2022 10:20 AM
44	Boat trailer parking for fishermen	9/26/2022 11:07 PM
45	Public park for swimming and camping, picnics etc.	9/26/2022 10:26 PM
46	Another campground with full hookups	9/26/2022 9:15 PM
47	Trails and playgrounds	9/26/2022 9:12 PM
48	Playground, splash pad, walking trial	9/26/2022 8:11 PM
49	Be mindful of Liability and future lawsuit costs to taxpayers (i.e. playground equipment; sports; etc.)	9/26/2022 6:20 PM
50	boat docks. kayak launch, kayak rental, picnic pavilion.	9/26/2022 4:58 PM
51	Pavilion, Firepit, Outdoor Grill, Small playground	9/26/2022 4:25 PM
52	safe place for kids. access for special needs/disabled	9/26/2022 3:22 PM
53	access to lake , venue for parties and get togethers,concession	9/26/2022 3:04 PM
54	flood it and grow rice.	9/26/2022 10:52 AM
55	Swim beach, lifeguard, play area	9/26/2022 10:26 AM

Master Plan

April 2022



EXTEND SHEET PILE WALL

RIP-RAP  
NO RAILING FOR THIS  
PORTION OF WALL

PLAZA WITH COMPASS ROSE &  
5° ANGLE OF DECLINATION

OVERHEAD ARCH

SWINGING  
BENCHES

12' WIDE HEAVY DUTY CONCRETE WALK  
(PHASE 2)

900 SF  
SPLASH PAD

PLAZA WITH  
RAISED FIRE PIT

PHASE 1:  
PERFORMANCE  
SHELTER AND  
ASSOCIATED  
SIDEWALKS

PAVED ACCESSIBLE  
SEATING AREA

LAWN AREA FOR  
SPECTATORS AND  
EVENT SPACE

INTERPRETIVE SIGNS W/  
HISTORIC IMAGES

12' WIDE HEAVY DUTY CONCRETE WALK  
(PHASE 1)

PHASE 2: LAKE CITY  
HISTORICAL  
WALK: INTERPRETIVE SIGNS  
W/ HISTORIC IMAGES

RESTAURANT  
DECK

HAMMER'S PUB & GRILL

MURAL

PHASE 3: OUTDOOR DINING  
AREA AND REVISED WALKS

TABLE TYP.

SCREEN  
HEDGE

OVERHEAD  
ARCH

EXTENDED ENTRY  
W/ BENCHES

PHASE 4:  
65' x 130' SHELTER:  
• FARMER'S MARKET  
• CAR SHOWS  
• CRAFT SHOWS  
• ICE RINK  
• FESTIVAL

PAVED PLAZA:  
• PICNICKING  
• OUTDOOR  
MARKET

SCREEN HEDGE

PROSPECT STREET

JOHN STREET





SCALE: 1" = 50'

J:\GIS Client\Missaukee-GD\Lake City\2220924 Docking Feasibility Study\2220924 Option 1.mxd - edempsey - 11/23/2022 9:55:39 AM

## Re: Request for Assistance - posting a Survey and related Public Notice




Robert C. Vautaw <rvautawlkcty@gmail.com>

To ● sales@missaukeesentinel.com



Mon 9/19/2022 1:48 PM

 Click here to download pictures. To help protect your privacy, Outlook prevented automatic download of some pictures in this message.



Hello, Jill:

Please see attached PDF documents we'd like to get in the paper. There is a 'public notice' along with the associated survey questions. Please provide the 'proofs' you outlined in your email.

Thank you,

Bob

**Robert C. Vautaw**

City Administrator

City of Lake City, Michigan

115 W John St, P.O. Box 1

Lake City, MI 49651

**CITY OF LAKE CITY  
PARKS AND RECREATION  
2022-2026 FIVE YEAR REC PLAN SURVEY**

The municipalities of Lake City, Lake Township, and Missaukee County are updating their Parks and Recreation Plan. These communities along with other recreation providers/users in the area, such as the City of McBain, are coordinating their planning efforts and want to hear from you!

This survey will be available from  
Monday, Sept. 26th to Wednesday, Oct. 26th

The survey can be found using the Survey Monkey link provided on the Township, County, and Missaukee Sentinel websites or by following the QR code below. The Hard copies of the survey will be available at the following locations:

Lake City Hall  
115 W. John St., Lake City, MI 49651

Lake City Township Hall  
8105 W. Kelly Rd., Lake City, MI 49651

Missaukee County Office  
111 S. Canal St., Lake City, MI 49651

Missaukee District Library  
210 S. Canal St., Lake City, MI 49651

McBain City Hall  
9478 S. Morey Rd., McBain, MI 49657

Survey QR Code:



<https://www.surveymonkey.com/r/ParksAndRecreationUserSurvey>

# Classified Ads

CALL YOUR CLASSIFIED SPECIALIST TODAY AT 231-839-5400

### Legals

**NOTICE TO CREDITORS**  
**ALL CREDITORS:** Bradley Farkas and Geraldine Farkas, co-successor trustees of the Farkas Family Living Trust, U/T/D June 6, 2006 as amended, give notice that the living grantor, John Farkas, born November 3, 1934 who resided in Missaukee County, Michigan, died September 13, 2021. Creditors of John Farkas for the Farkas Family Living Trust U/T/D June 6, 2006 as amended will be forever barred unless presented to Bradley Farkas, co-successor trustee within four (4) months of the date of publication of this notice.

Bradley Farkas  
 1000 Oak St.  
 Eastford, MI 48328

### Legals

**PUBLIC HEARING NOTICE:**  
 The Missaukee County Board of Commissioners will conduct a public hearing on September 29, 2022 at 3:30 PM for the purpose of soliciting input regarding the Missaukee County Fiscal year 2023 Budget. This meeting will be held in the Missaukee County Annex Building, 105 S. Canal Street, Lake City, MI. A draft copy of the Recommended Budget is available on the county's website at [www.missaukee.org](http://www.missaukee.org). Individuals with disabilities requiring auxiliary aids or services who are planning to attend the meeting should notify County Clerk, Jessica Nielsen at (231) 839-4967 within a reasonable time in advance of the meeting.

### Announcements

Have something you want to sell?

Need to hire someone?  
Have a Service you would like people to know about?

Call or stop in to  
The Missaukee Sentinel to  
place your classified ad.

231-839-5400

**STAY CONNECTED**  
with your Missaukee County News Source!

The Missaukee Sentinel

**SUBSCRIBE TODAY!**

Starting at only \$26 a year!

CALL TO SUBSCRIBE: 231.839.5400

We're open 9am-5pm M-F

### Trucks



**2022 Chevy Silverado 1500 Crew Cab 4x4 Z71** with the 3.0 Duramax Diesel. Only 12,500 miles! But look at this with almost 300HP and a whopping 460 lbs of torque it is designed to pull!! The best part, I have been driving this truck and it is getting 34 MPH on the highway out of a full size truck!!! **Call Scott McDowell for more details! 231-884-6323. Classic Chevrolet Stock# C1283**

## LAKE CITY AREA SCHOOLS SNOW PLOWING BIDS

Lake City Area Schools is accepting bids for snow plowing the following buildings: Middle/High School on Russell Street; Elementary School on Davis Road; Central Office/Transportation on Mitchell St. Contractor must have sufficient equipment to perform the work prior to 7:00 a.m. as well as equipment to move the snow banks. Request for bid document available at [www.lakecityschools.net](http://www.lakecityschools.net) or by calling 231-839-4333. Please submit bid to Lake City Area Schools, PO Box 900, 710 E. Mitchell St., Lake City, MI 49651, by Tuesday, October 11, 2022 at 1:00 p.m.

### CITY OF LAKE CITY PARKS AND RECREATION 2022-2026 FIVE YEAR REC PLAN SURVEY

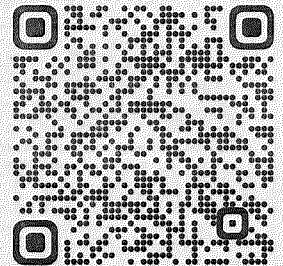
The municipalities of Lake City, Lake Township, and Missaukee County are updating their Parks and Recreation Plan. These communities along with other recreation providers/users in the area, such as the City of McBain, are coordinating their planning efforts and want to hear from you!

This survey will be available from Monday, Sept. 26th to Wednesday, Oct. 26th

The survey can be found using the Survey Monkey link provided on the Township, County, and Missaukee Sentinel websites or by following the QR code below. The Hard copies of the survey will be available at the following locations:

- Lake City Hall  
115 W. John St., Lake City, MI 49651
  - Lake City Township Hall  
8105 W. Kelly Rd., Lake City, MI 49651
  - Missaukee County Office  
111 S. Canal St., Lake City, MI 49651
  - Missaukee District Library  
210 S. Canal St., Lake City, MI 49651
  - McBain City Hall  
9478 S. Morey Rd., McBain, MI 49657
- <https://www.surveymonkey.com/r/ParksAndRecreationUserSurvey>

Survey QR Code:



**From:** [ads@missaukeesentinel.com](mailto:ads@missaukeesentinel.com)  
**To:** [Bob Vautaw](#)  
**Subject:** FW: City of Lake City Rec Plan Open House 12-2-22  
**Date:** Tuesday, November 29, 2022 3:31:49 PM  
**Attachments:** [00084202.pdf](#)

---

Bob,  
Attached is the ad for the Open House Rec Plan

Thank you

Jill Thomas  
Missaukee Sentinel  
Office Manager/Sales  
Off: 231.839.5400  
Fx: 231.839.5500  
Cell: 231.920.0990

---

**From:** Kathy Walker  
**Sent:** Tuesday, November 29, 2022 3:30 PM  
**To:** [ads@missaukeesentinel.com](mailto:ads@missaukeesentinel.com)  
**Subject:** City of Lake City Rec Plan Open House 12-2-22

Kathy Walker  
Graphic Designer  
Cadillac News  
231-779-4146

# **NOTICE**

## **PARKS AND RECREATION**

### **DRAFT 2023-2027 FIVE YEAR REC PLAN REVIEW**

### **& PUBLIC OPEN HOUSE**

The municipalities of Lake City, Lake Township, and Missaukee County are updating their Parks and Recreation Master Plan. These communities along with other recreation providers/users in the area, such as the City of McBain, are coordinating their planning efforts and want to hear from you!

The Draft Parks and Recreation Plan for **Lake City** and **Lake Township** will be available from

**Thursday, Dec. 1st to Friday, Dec. 30th**

The Draft Parks and Recreation Plan for **Missaukee County** will be available from

**Sunday, Dec. 11th to Monday, Jan. 9th**

The Draft Parks and Recreation Plans can be found on the Township, County, and Missaukee Sentinel websites. Hard copies of the Draft Parks and Recreation Plans will be available at the following locations:

**Lake City Hall**  
**115 W. John St.**  
**Lake City, MI 49651**

**Lake Township Hall**  
**8105 W. Kelly Rd.**  
**Lake City, MI 49651**

**Missaukee County Office**  
**111 S. Canal St.**  
**Lake City, MI 49651**

Lake City, Lake Township, and Missaukee County will also be hosting a joint Open House to give the public an opportunity to review the Draft Recreation Plans and provide input.

**The open house will be located at Lake Township Hall on**  
**Dec. 21 from 6:00 PM to 7:00 PM**

**From:** [sales@missaukeesentinel.com](mailto:sales@missaukeesentinel.com)  
**To:** [Bob Vautaw](#)  
**Subject:** RE: PARKS AND RECREATION PLAN; PUBLIC NOTICE  
**Date:** Thursday, December 22, 2022 11:28:00 AM  
**Attachments:** [image001.png](#)

---

Will do

Thank You

Jill Thomas  
Missaukee Sentinel  
Office Manager/Sales  
Off: 231.839.5400  
Fx: 231.839.5500  
Cell: 231.920.0990

---

**From:** Bob Vautaw  
**Sent:** Thursday, December 22, 2022 11:19 AM  
**To:** [sales@missaukeesentinel.com](mailto:sales@missaukeesentinel.com)  
**Subject:** RE: PARKS AND RECREATION PLAN; PUBLIC NOTICE

Ok, please plan on running it in the December 30<sup>th</sup> paper.

Thank you,

**Robert C. Vautaw**  
City Administrator  
City of Lake City, Michigan  
115 W John St, P.O. Box 1  
Lake City, MI 49651  
[vautawr@cityoflakecity.com](mailto:vautawr@cityoflakecity.com)  
231.839.4561 – Office  
231.839.8666 - Fax  
231.253.7523 - Cell



CONFIDENTIALITY NOTICE:

This email and any attachments are for the sole use of the intended recipient(s) and may contain information that is confidential and protected from disclosure under the law, including attorney-

# **NOTICE**

## **PARKS AND RECREATION**

### **2023-2027 FIVE YEAR REC PLAN**

The municipalities of Lake City, Lake Township, and Missaukee County are updating their Parks and Recreation Plan. These communities along with other recreation providers/users in the area, such as the City of McBain, are coordinating their planning efforts and want to hear from you! We will be hosting a public comment session during our January Board meetings.

#### **Public Hearing dates & locations:**

##### **City of Lake City - Monday, Jan. 9th**

at the Lake City Hall

115 John St., Lake City, Michigan 49651  
(Telephone: 231-839-8666), at 7:00 p.m.

##### **Lake Township - Wednesday, Jan. 11th**

at the Lake Township Hall

8105 W. Kelly Rd., Lake City, Michigan 49651  
(Telephone: 616-866-0622), at 4:30 p.m.

##### **Missaukee County - Tuesday, Jan. 10th**

at the Missaukee County Hall

111 S. Canal St., Lake City, Michigan 49651  
(Telephone: 231-839-7264), at 4:00 p.m.







UNITED ROAD  
DRIVEN TO DELIVER



REGULAR COUNCIL MEETING  
MINUTES  
MONDAY, JANUARY 9, 2023

Mayor Ardis called the Meeting to order at 7:00 p.m.

Ray Vasser gave the Evening Prayer.

Mayor Ardis led the Pledge of Allegiance.

Roll Call: All present (Bartholomew, Bartz, Elmquist, Ostrander, Pickford, Smith)

**Motion** by Smith, seconded by Bartholomew to approve AGENDA with correction of removing #5 from the action items. Motion Carried.

**Motion** by Elmquist, seconded by Ostrander to PAY THE BILLS.

Yeas: 6 (Elmquist, Ostrander, Pickford, Smith, Bartholomew, Bartz)

Nays: 0

Motion Carried.

**Motion** by Smith, seconded by Pickford to APPROVE REG. COUNCIL MTG. MINUTES OF DECEMBER 12, 2022. Motion Carried.

**PUBLIC COMMENTS:**

Ryan Carrigan -Beer tent at Winter Fest February 4<sup>th</sup>.

Diane Minthorn – Concerns with blight on Gladwin St.

Terry Kaptor -Concerns on burning at short term rentals.

Jim Vanderlaun- Concerns on long term rentals.

**ADDITIONAL DISCUSSION:** Mayor Ardis presented the Parks and Recreation Master Plan to the public.

**GUEST SPEAKER:** Cole Swinehart presented improvements to the CLC website.

**MOTION** by Smith, seconded by Ostrander to approve the resolution to adopt the 2023-2027 Parks and Recreation Plan. Motion carried.

**MOTION** by Pickford, seconded by Bartholomew to approve the purchase of (9) Microsoft Surface Go 2 Tablets, accessories, and installation for \$5,571.00.

Yeas: 6 (Elmquist, Ostrander, Pickford, Smith, Bartholomew, Bartz)

Nays: 0

Motion Carried.

**MOTION** by Pickford, seconded by Elmquist to approve the purchase of a Life Safety Trench Box for \$8,100.00.

Yeas: 6 (Ostrander, Pickford, Smith, Bartholomew, Bartz, Elmquist)

Nays: 0

Motion Carried.

**MOTION** by Pickford, seconded by Bartholomew to approve payment for the Groundwater Annual Permit Fee Group 1 Facility, 2023, D for \$3,650.00.

Yeas: 6 (Pickford, Smith, Bartholomew, Bartz, Elmquist, Ostrander)

Nays: 0

Motion Carried.

**ADJOURNMENT:** 8:42 p.m.

Danielle Hoblet, acting Clerk

City of Lake City

**CITY OF LAKE CITY**  
**MISSAUKEE COUNTY, MICHIGAN**

Resolution Number 2023-1

A RESOLUTION OF INTENT TO APPROVE MOTION ON THE CITY OF LAKE CITY 2023-2027 FIVE YEAR REC PLAN REVIEW, WHICH INCLUDES DEFINED AREAS OF THE CITY OF LAKE CITY, WITHIN THE BOUNDARIES OF MISSAUKEE COUNTY, MICHIGAN, TO THE EXTENT PERMITTED BY LAW.

THIS RESOLUTION TO BE EFFECTIVE IMMEDIATELY FOLLOWING ADOPTION.

Recorded in the minutes of a regular meeting of the City Council, City of Lake City, Missaukee County, Michigan held in the Lake City Municipal Building on the 9<sup>th</sup> day of January 2023 at 7:00 PM.

Present Bartholmew, Bartz, Elmquist, Ostrander, Pickford, Smith

Absent None

---

Lake City Council Member, Smith offered the following motion, and the resolution was supported by Lake City Council Member Ostrander.

**WHEREAS**, the City has undertaken a careful planning process to determine the recreation and related natural resource conservation needs and desires of its residents during the delineated five year period; and

**WHEREAS**, the City of Lake City has entered this planning process in collaboration with Lake Township and Missaukee County; and

**WHEREAS**, the combined area of the aforementioned local units of government constitutes the planning area; and

**WHEREAS**, the City of Lake City is of the understanding that the governing bodies of the aforementioned local units of government intend to pass a similar resolution of adoption of the 2023-2027 Parks and Recreation Master Plan; and

**WHEREAS**, the City of Lake City Parks and Recreation Committee is made up of community representatives appointed by the Mayor; and

**WHEREAS**, the City of Lake City began the process of developing a community recreation and natural resource conservation plan in accordance with the most recent guidelines developed by the Department of Natural Resources and made available to local communities, and

**WHEREAS**, residents of the City of Lake City were provided with a well-advertised opportunity during the development of the draft plan to express opinions, ask questions and discuss all aspects of the recreation and natural resource conservation plan; and

**WHEREAS**, a public hearing was held on January 9, 2023 at the City of Lake City Municipal Building to provide an opportunity for all residents of the planning area to express opinions, ask questions and discuss all aspects of the 2023-2027 Parks and Recreation Master Plan; and

**WHEREAS**, the City of Lake City has developed the plan as a guideline for improving recreation and enhancing natural resource conservation for the City of Lake City; and

**WHEREAS**, after the public hearing, the City of Lake City voted to adopt said 2023-2027 Parks and Recreation Master Plan.

**NOW THEREFORE, BE IT RESOLVED** by the Lake City Council, at a Regular Meeting of the City Council, held in the Lake City Municipal Building on the 9<sup>th</sup> day of January 2023 at 7:00 PM granting the aforementioned authority.

**CERTIFICATION**, I, the undersigned and duly qualified and acting clerk of the City of Lake City, Missaukee County, Michigan, (the "City") do hereby certify that the preceding is a true and complete copy of a resolution adopted by the City Council at a regular meeting held on Jan 9, 2023, and further the original of which is on file in my office and that public notice of said meeting was given pursuant to and in compliance with Act 267 of the Public Acts of Michigan of 1976, as amended.

Acting Clerk

Dannelle Helms

Date

1-9-2023